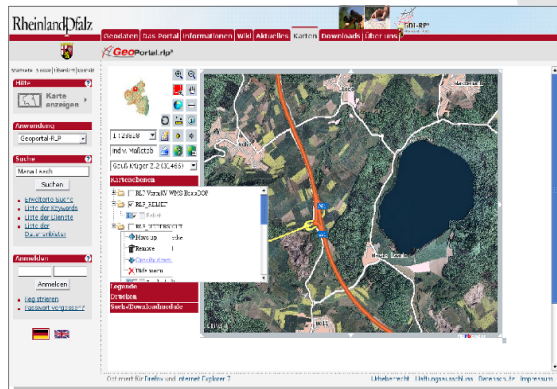


Mapbender is a geo portal environment. Create geospatial web applications without writing a single line of code. Create your **OWS Repository** with all major standards including ISO, OGC WMS, WFS, WMC, SLD, GML, KML and INSPIRE metadata, viewing, download, data, and networking guidelines.

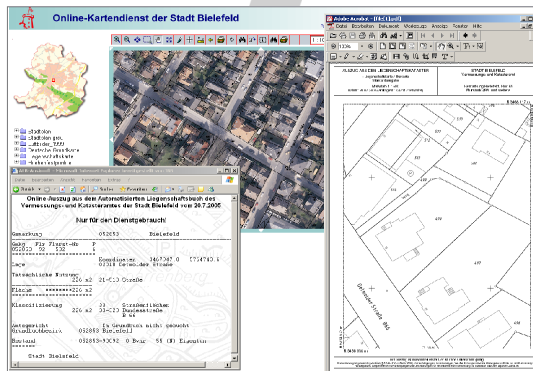
The **Mapbender** server side is implemented in PHP, PostgreSQL and PostGIS. The client side is implemented in JavaScript and jQuery. No plug-ins needed. Mapbender is licensed Free and Open Source software owned and released by the Open Source Geospatial Foundation (OSGeo – <http://mapbender.osgeo.org>).



Geoportal - Rhineland Palatinate SDI in Germany
(<http://www.geoportal.rlp.de>)

Server

Mapbender has been designed to manage spatial data infrastructure components including service monitoring, logging, metadata management and security facading. It is used to deploy web mapping applications ranging from slippy maps using OpenLayers to full fledged web GIS applications featuring Online digitizing functionality with snapping, complex features and OGC WFS storage. User management includes full authentication, authorization and security at service, operation and feature level.



Online mapping portal (city of Bielefeld)

High-End Functionality:

- PDF-printing (DIN A4 to A0) with professional layout
- On-the-fly reprojection, intersection, snapping
- Internationalisation, jQuery UI theme rollover support
- Fine grained access control, and OGC security proxy
- Metadata management supporting OGC, ISO and INSPIRE
- KML, RSS and GeoRSS display, import and export
- REST-based Capabilities maintenance and monitoring



The German language OSGeo Local Chapter

Viewer

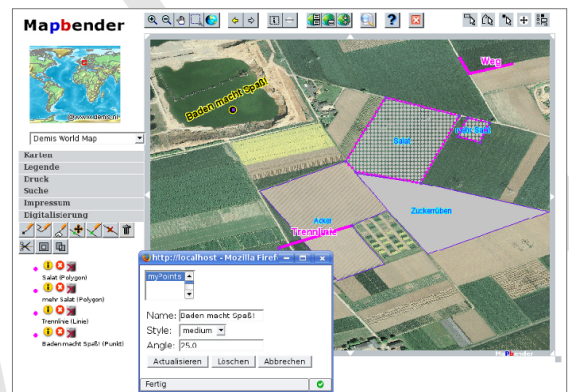
Mapbender comes with Off-The-Shelf and Ready-To-Go applications configured to run with any standard web mapping server including: MapServer, GeoServer, deegree, Autodesk MapGuide, ArcGIS Server, Intergraph, SmallWorld, Oracle WMS or any SQL database. The integration of OpenLayers also allows to use tiling services like MapProxy, GeoWebCache, Google, Bing, Yahoo and many others.



Mapbender search functionality (City of Wesseling)

Complex digitizing on OGC WFS-T storage

Digitizing modules allows to create, read, update, and delete point, line, and polygon features including enclaves and islands. Features can be divided, intersected, broken up and compounded directly in the standardized, transactional OGC WFS storage (Web Feature Service). No plug-ins needed, support for all major browsers.



Mapbender digitizing on WFS-T storage

Geoportal

The seamless integration of the **Mapbender** Server components with the client functionality provided by **OpenLayers** and **jQuery** is an ideal basis for the implementation of comprehensive Geoportals.

Mapbender is used by the public administration to implement the INSPIRE regulation. Private enterprises throughout the world manage their spatial data infrastructures and deploy web based map applications using Mapbender.

Get inspired by the diversity of applications in the Mapbender gallery: <http://www.mapbender.org/Gallery>

Ask your local **Mapbender** service provider for more information and support or contact the developer community. If you are in need of additional functionality: <http://www.mapbender.org/Support>



Official Open Source Geospatial Foundation Project