

GeoSpatial Open Source Software



Compiled by:
Cameron Shorter
<http://lisasoft.com>
March 2012



Derived from OSGeo-Live Project Overviews, by OSGeo-Live authors

<http://live.osgeo.org>



OSGeo-Live



Applications

Geospatial

Wed, 07 Sep 18:24 user



Home



File System



Trash



Spatial Tools



Navigation a...



Help



Desktop GIS



Web Services

- Browser Clients
- Crisis Management
- Databases
- Desktop GIS
- Navigation and Maps
- Spatial Tools
- Web Services
- OSGeo Software Help

Databases

Crisis Manag..

- atlasstyler
- geopublisher
- GRASS GIS
- gvSIG
- Kosmo
- Open Jump
- OssimPlanet
- Quantum GIS
- SAGA GIS
- SpatiaLite GIS
- uDig






Thumb Drive & Virtual Machine




VirtualBox OSE

File Machine Help

New Settings **Start** Discard

 **osgeo-live**
Powered Off



Details Snapshots Description

General
Name: osgeo-live
OS Type: Ubuntu

System
Base Memory: 512 MB
Processor(s): 1
Boot Order: Floppy, CD/DVD-ROM, Hard Disk
VT-x/AMD-V: Enabled
Nested Paging: Enabled

Display
Video Memory: 12 MB
3D Acceleration: Disabled
2D Video Acceleration: Disabled

Storage
IDE Controller
IDE Secondary Master (CD/DVD): osgeolive-4.0.iso (4.74 GB)
Floppy Controller
Floppy Device 0: Empty

Audio
Host Driver: PulseAudio
Controller: ICH8AC27

Start the selected virtual machine



OSGeo-Live



osgeo-live [Running] - VirtualBox OSE



Machine DeVICES Help

```
ISOLINUX 3.63 Debian-2008-07-15 Copyright (C) 1994-2008 H. Peter Anvin  
boot: _
```





OSGeo-Live



LISAsoft

osgeo-live [Running] - VirtualBox OSE



Machine DeVICES Help

OSGeo Live 4.0

live - boot the Live System

xforcevesa - boot Live in safe graphics mode

install - start the installer directly

textonly - boot Live in textonly mode

debug - boot the Live System without splash and show b

memtest - Run memtest

hd - boot the first hard disk

Press [Tab] to edit options



OSGeo-Live



osgeo-live [Running] - VirtualBox OSE




Machine DeVICES Help



user

Automatic Login ☐

Select language and click Log In

 Cancel

Log In

Language: English (United States) ▼

Keyboard: USA ▼

Sessions: Xubuntu Session

Sat 2:11 PM





OSGeo-Live



Applications Geospatial [osgeo - Revision 7187: /li... Sun, 04 Sep 17:49 user

Install RELEASE

Desktop GIS

passwords.txt

Databases

Spatial Tools

Navigation a...

Log out

Trash

Web Services

Reboot

File System

Browser Clie...

Shut down

- Browser Clients
- Crisis Management
- Databases
- Desktop GIS
- Navigation and Maps
- Spatial Tools
- Web Services
- OSGeo Software Help

- atlasstyler
- geopublisher
- GRASS GIS
- gvSIG
- Kosmo
- Open Jump
- OssimPlanet
- Quantum GIS
- SAGA GIS
- Spatialite GIS
- uDig



Open Source Geospatial Foundation (OSGeo)



Non Profit Umbrella for:

GeoSpatial Open Source
Software

Education

Open Data

<http://osgeo.org>



<http://live.osgeo.org>



OGC Standards

Interoperability

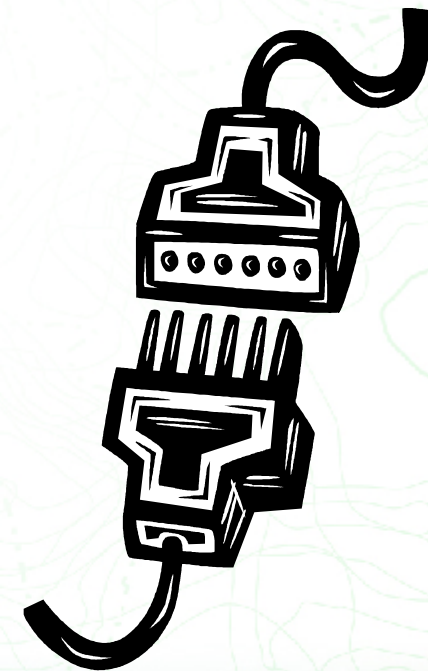


Future Proof

Return on Investment



OGC[®]
Open Geospatial Consortium, Inc.

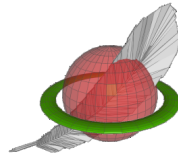


Databases

PostGIS



Spatialite



pgRouting



rasdaman
raster data manager



PostGIS – Spatial Database



pgAdmin III

File Edit Plugins View Tools Help

Object browser

- Servers (1)
 - local (localhost:5432)
 - Databases (5)
 - medford
 - Catalogs (2)
 - Schemas (1)
 - public
 - Domains (0)
 - FTS Config
 - FTS Diction
 - FTS Parsers
 - FTS Templa
 - Functions (0)
 - Sequences
 - Tables (19)
 - agebyse
 - families

Properties

Table

- agebysex
- families
- geometry_colu
- jacksonco_sch
- jacksonco_stre
- jacksonco tax

SQL pane

```
-- Table: fa
-- DROP TABLE
CREATE TABLE
(
  geo_id cha
  geo_id2 ch
  sumlevel c
  geo_name c
```

Retrieving Table details... Done.

Edit Data - local (localhost:5432) - medford - familie

File Edit View Tools Help

No limit

	geo_id character	geo_id2 character	sumlevel character	geo_name character	families integer
1	14000US410	4102900010	140	Census Trac	395
2	14000US410	4102900020	140	Census Trac	813
3	14000US410	4102900020	140	Census Trac	853
4	14000US410	4102900020	140	Census Trac	943
5	14000US410	4102900030	140	Census Trac	1102
6	14000US410	4102900040	140	Census Trac	2024
7	14000US410	4102900040	140	Census Trac	2466
8	14000US410	4102900050	140	Census Trac	1918

Scratch pad

pgAdmin III Edit Data - local (local...



pgRouting – routing for PostGIS



pgAdmin III

File Edit Plugins View Tools Help

Object browser

- Servers (1)
 - local (localhost:5432)
 - Databases (7)
 - mapbender
 - osm_local
 - osm_local_sme
 - pgrouting
 - Catalogs (2)
 - Schemas (1)
 - public
 - Domains
 - FTS Conf
 - FTS Dicti
 - FTS Parse
 - FTS Temp
 - Functions
 - Sequence

Query - pgrouting on user@localhost:5432 *

File Edit Query Favourites Macros View Help

SQL Editor Graphical Query Builder

```
SELECT * FROM shortest_path(
    'SELECT gid as id, source, target, length AS cost
    FROM ways', 605, 359, false, false);
```

Output pane

Data Output Explain Messages History

	vertex_id integer	edge_id integer	cost double precision
1	605	702	0.10483378545471
2	604	37147	0.0661843275003415
3	19115	37148	0.0523255638550117
4	1012	1180	0.0148933890379493
5	1011	1179	0.135525932020211

Retrieving Schema details... Done.

pgAdmin III Query - pgrouting on u...



SpatiaLite – Compact Database



spatialite-gui [a GUI tool for SQLite/SpatiaLite]

Files

- /home/pi/data/geodata/spatialite/chgeostat.s
 - geom_cols_ref_sys
 - geometry_columns
 - geometry_columns_auth
 - geostatb
 - geostatk**
 - geostatl
 - geostatr
 - geostats
 - layer_params
 - layer_statistics
 - layer_sub_classes
 - layer_table_layout
 - pattern_bitmaps
 - project_defs
 - raster_pyramids
 - spatial_ref_sys

```
SELECT ROWID, "PK_UID", "KT", "NAME", "KURZ", "Geometry"
FROM "geostatk"
ORDER BY ROWID
```

	OWID	PK_UID	KT	NAME	KURZ	Geometry
6		6	6	Obwalden	OW	BLOB sz=1802 GEOMETRY
7		7	7	Nidwalden	NW	BLOB sz=1405 GEOMETRY
8		8	8	Glarus	GL	BLOB sz=1629 GEOMETRY
9		9	9	Zug	ZG	BLOB sz=1117 GEOMETRY
10		10	10	Fribourg	FR	BLOB sz=5816 GEOMETRY
11		11	11	Solothurn	SO	BLOB sz=5028 GEOMETRY
					BS	BLOB sz=669 GEOMETRY
					BL	BLOB sz=3002 GEOMETRY
					SH	BLOB sz=2663 GEOMETRY
				errhoden	AR	BLOB sz=1805 GEOMETRY
				rhoden	AI	BLOB sz=1255 GEOMETRY
					SG	BLOB sz=4949 GEOMETRY
					GR	BLOB sz=7789 GEOMETRY
					AG	BLOB sz=4173 GEOMETRY
					TG	BLOB sz=3194 GEOMETRY

BLOB explorer

Hexadecimal dump | Geometry explorer

SRID: 4326

Geometry type: **MULTIPOLYGON**

#1 POLYGON:

- 1) exterior ring: 218 vertices
- 1.1) interior ring: 81 vertices
- 1.2) interior ring: 6 vertices

Geometry preview



Rasdaman – Raster Database

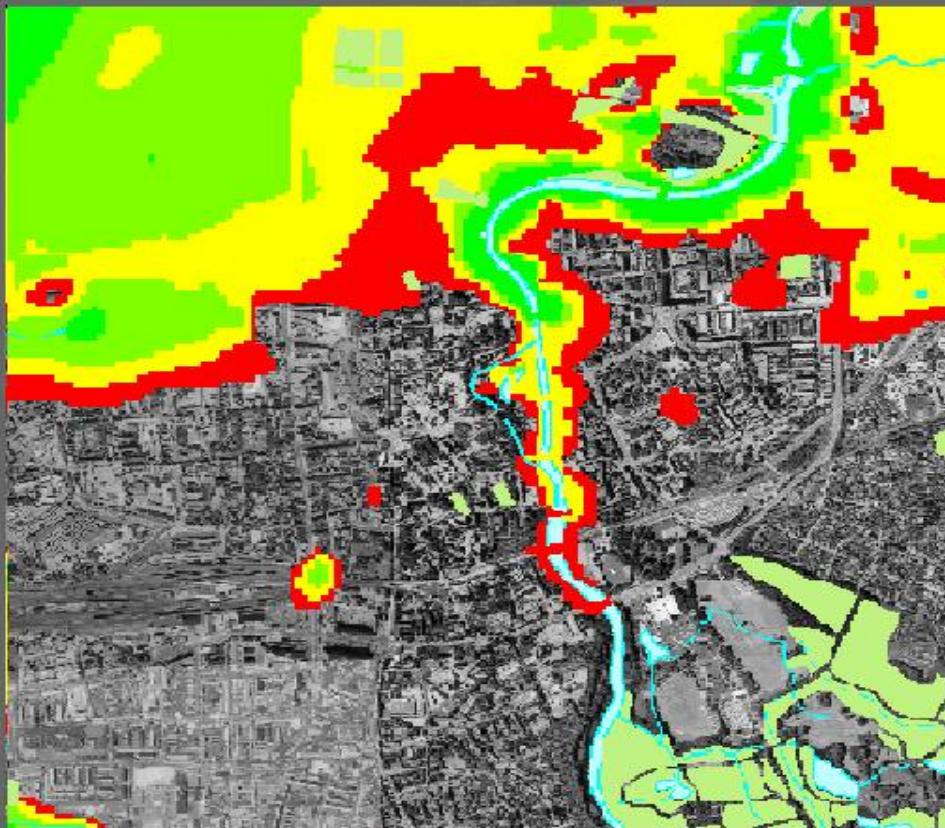
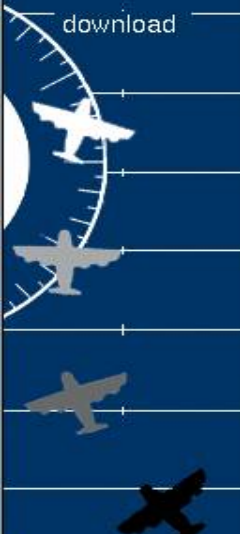


Earth Observation
for
Geo-information



home

download



rasdaman
raster data management

Kartenlayer:

- | | |
|--|--------------|
| <input type="checkbox"/> TK50_Gebaeudelinien | AdV_standard |
| <input type="checkbox"/> TK50_Gebaeudeflaechen | AdV_standard |
| <input checked="" type="checkbox"/> TK50_Gewaesserlinien | AdV_standard |
| <input checked="" type="checkbox"/> TK50_Gewaesserdecker | AdV_standard |
| <input type="checkbox"/> TK50_Waldecker | AdV_standard |
| <input checked="" type="checkbox"/> Hoehenmodell | faerbbar |
| <input type="checkbox"/> Kombi | standard |
| <input checked="" type="checkbox"/> Luftbild | standard |

verlagere markierte Layer:

Kartenbild & Navigation:

Bildgröße [Pixel]: 500x500



nördl. Rand:

5736643.39999999

westl. Rand:

3452605.9

östl. Rand:

3458725.9

südl. Rand:

5730523.39999999

Web Services

MapServer



TinyOWS



GeoServer



deegree



QGIS Server



MapProxy



52°North
WSS



52°North
SOS



52°North
WPS



ZOO Project



GeoNetwork



pycsw



<http://live.osgeo.org>



MapServer – Web Services



osgeo-live4.0rc9 [Running] - VirtualBox OSE

Machine Devices Help

Applications Geospatial Places ? ? ?

MapServer - Itasca Application - Mozilla Firefox

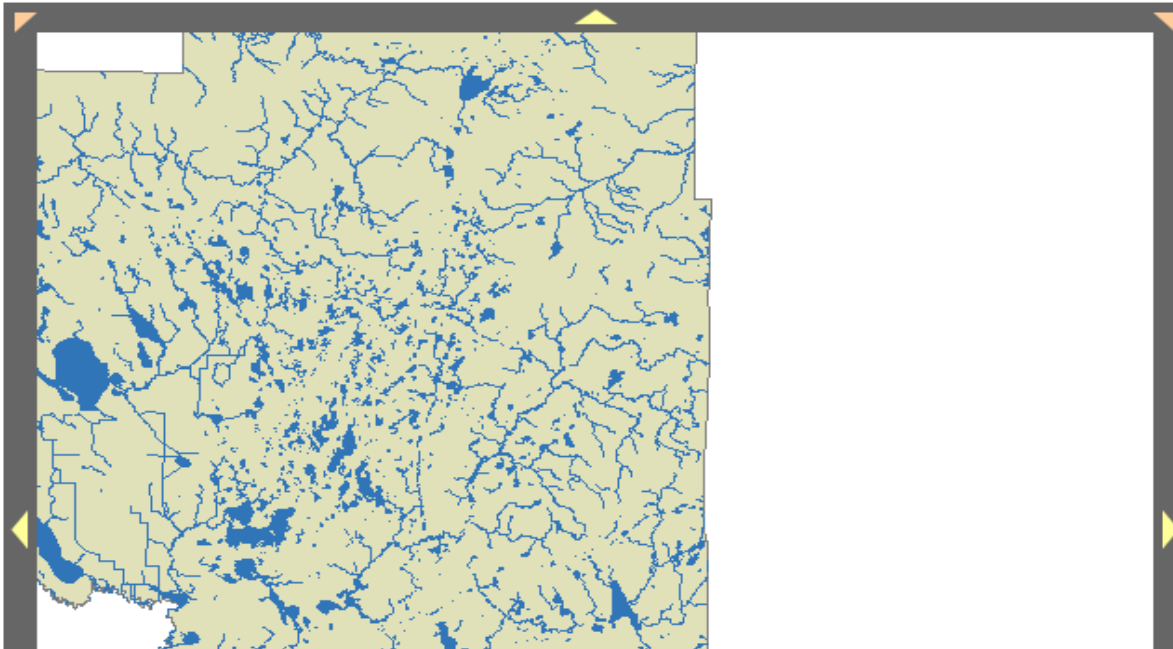
File Edit View History Bookmarks Tools Help

http://localhost/cgi-bin/mapserv?mode=browse&layer=lakespy2&layer=dlgstln2 ☆

Most Visited Getting Started Latest Headlines

MapServer - Itasca Application

MapServer - Itasca Application



Refresh/Query

☒ Browse map
☐ Query feature
☐ Query multiple features

Select Layers to Display:

Airports
Cities
Lakes & Rivers

Zoom In ☐ Pan ☒ Zoom Out ☐

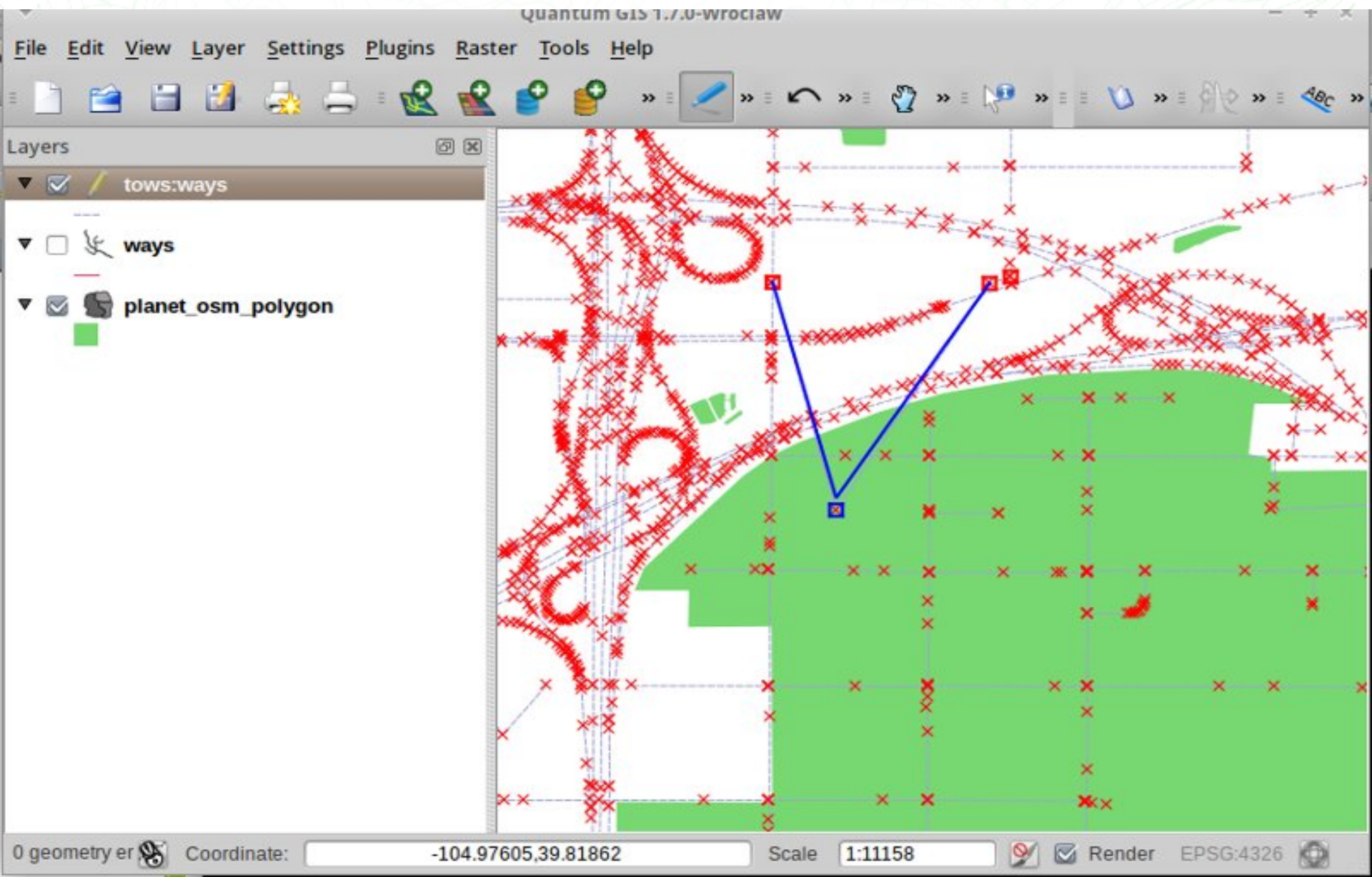
Zoom Size 2

Legend

Streams
Lakes & Rivers



TinyOWS - WFS-T





GeoServer – Web Services



GeoServer: Demo requests - Mozilla Firefox

File Edit View History Bookmarks Tools Help

http://localhost:8082/geoserver/web/?wicket:interface

GeoServer: Demo requests

Request: WFS_getFeatureBBOX-1.0.xml

URL: http://localhost:8082/geoserver/wfs?wicket:interface

Body

```
1 <!-- Performs a ge
2 <!-- The BBOX fil
3 <!-- it fetches a
4 <!-- This exampl
5 <!-- case we just
6
7 <wfs:GetFeature se
8   outputFormat="G
9   xmlns:topp="http
10  xmlns:wfs="http:
11  xmlns:ogc="http:
12  xmlns:gml="http:
13  xmlns:xsi="http:
14  xsi:schemaLocati
15
16  <wfs:Query type="
17    <ogc:PropertyFi
18    <ogc:PropertyFi
19    <ogc:Filter>
20      <ogc:BBOX>
21        <ogc:Prope
22        <gml:Box s
23        <gml:co
24        </gml:Box>
```

GeoServer: Web Feature Service

GeoServer

Web Feature Service

Manage the publishing of feature data.

Service Metadata

☒ Enable WFS

☐ Strict CITE compliance

Maintainer

<http://jira.codehaus.org/secure/BrowsePro>

Find: demo

Done

Previous

Services

- Server
 - Server Status
 - Contact Information
 - Global Settings
 - JAI Settings
 - About GeoServer
- Services
 - GWC
 - WCS



deegree – Web Services



deegree



deegree Web Applications

[Services](#) (WMS, WFS, WCS)
[Client](#) (iGeoPortal)

Documentation

WMS
[deegree WMS](#) [PDF]
[readme](#) [TXT]

WFS
[deegree WFS](#) [PDF]
[readme](#) [TXT]

WCS
[deegree WCS](#) [PDF]
[readme](#) [TXT]

iGeoPortal
[deegree iGeoPortal](#) [PDF]
[readme](#) [TXT]

deegree online

[Home Page](#)
[Wiki](#)
[Demo Installation](#)
[Issue Tracker](#)
[Users Mailing List](#)
[Developers Mailing List](#)

deegree is a Java Framework offering the main building blocks for Spatial Data Infrastructures. Its entire architecture is developed using standards of the [Open Geospatial Consortium](#) (OGC) and [ISO/TC 211](#) (ISO Technical Committee 211 -- Geographic Information/Geomatics).

deegree encompasses OGC Web Services as well as Clients and security components.

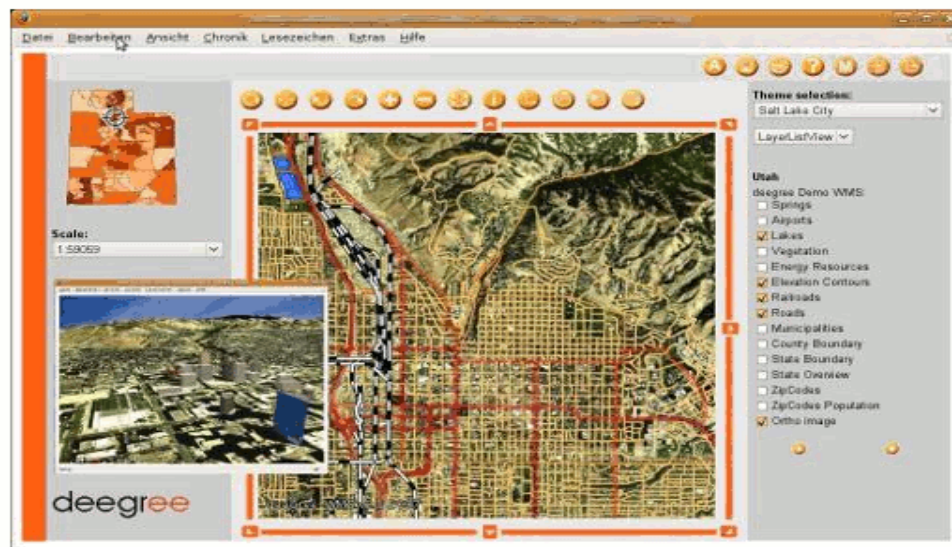
deegree is built by a number of participants. lat/lon and the GIS Research Group of the Department of Geography of University of Bonn are responsible for project coordination.

deegree is Free Software:

- deegree web services are protected by the [GNU Lesser General Public License \(GNU LGPL\)](#).
- deegree iGeoPortal is protected by the [GNU General Public License \(GNU GPL\)](#).

deegree is an [OSGeo project](#).

Thanks for using deegree!





QGIS Server – WMS



Quantum GIS 1.5.0-Tethys - NaturalEarth

File Edit View Layer Settings Plugins Vector CadTools Help

Layers

- 10m_populated_place...
 - 0.000 - 10668.000
 - 10668.000 - 42849.000
 - 42849.000 - 108420.000
 - 108420.000 - 327004.000
 - 327004.000 - 35676000.000
- Water
- 10m_rivers_lake_centerlines
 - 0.0000 - 2.0000
 - 2.0000 - 4.0000
 - 4.0000 - 6.0000
 - 6.0000 - 8.0000
 - 8.0000 - 10.0000
- 10m_lakes
- 10m_ocean
- HYP_50M_SR_W
- 10m_land

Overview

Layer Properties - 10m_rivers_lake_centerlines

Renderer: Graduated

Column: ScaleRank

Symbol: change

Color ramp: [source]

Classes: 5

Mode: Equi

Symbol	Range	Label
0.0000 - 2.0000	0.0000 - 2.0000	0.0000 - 2.0000
2.0000 - 4.0000	2.0000 - 4.0000	2.0000 - 4.0000
4.0000 - 6.0000	4.0000 - 6.0000	4.0000 - 6.0000
6.0000 - 8.0000	6.0000 - 8.0000	6.0000 - 8.0000
8.0000 - 10.0000	8.0000 - 10.0000	8.0000 - 10.0000

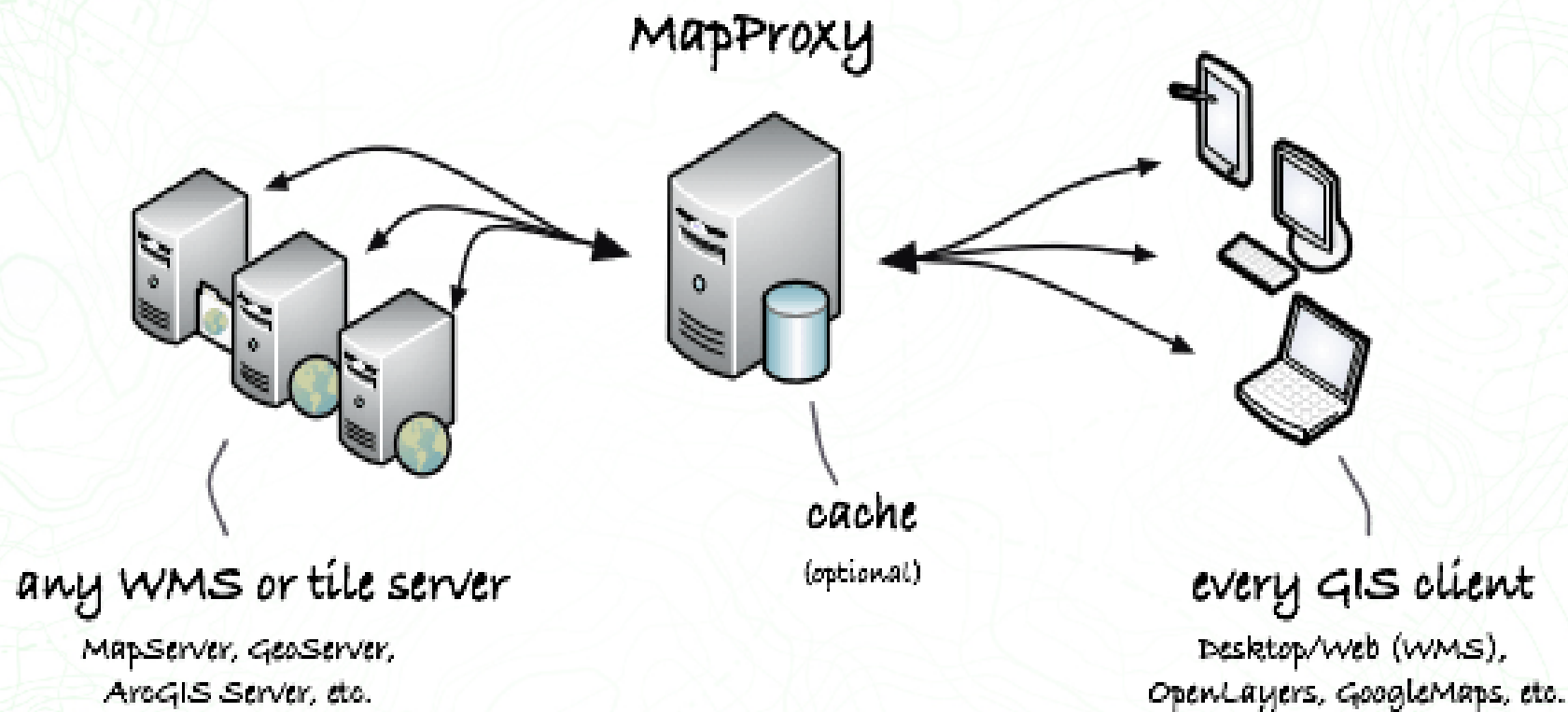
Symbology

Labels

Attributes



MapProxy – WMS & Tile Proxy





MapTiler



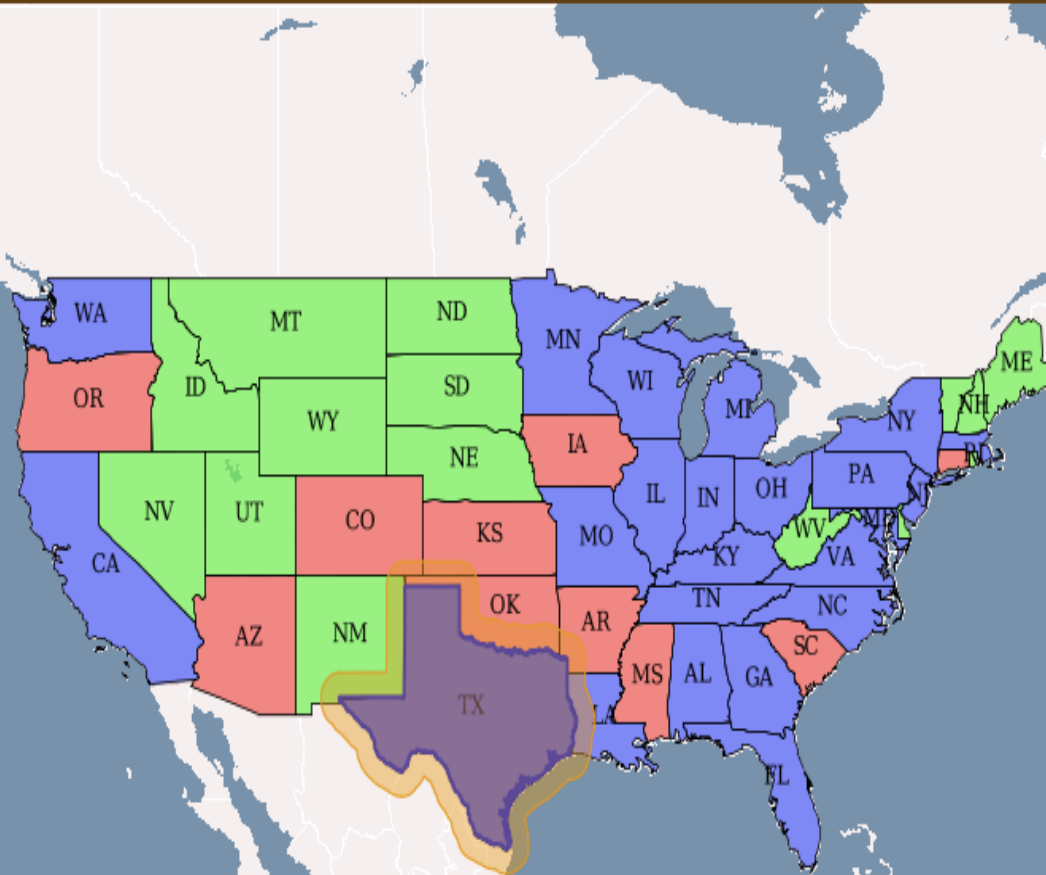
<http://live.osgeo.org>



ZOO – Web Processing Service



ZOO



ZOO Spatial Tools demo

© Copyright [GeoLabs](#) & [3LIZ](#)



52°North WPS – Web Processing Service



WPS TestClient...

52north

Server:	<input type="text" value="http://localhost:8083/wps/WebProcessingService"/>
Request:	<pre><wps:DataInputs> <wps:Input> <ows:Identifier>data</ows:Identifier> <wps:Reference schema="http://schemas.opengis.net/gml/2.1.2/feature.xsd" xlink:href="http://giv-wps.uni-muenster.de:8080/geoserver/wfs"> </wps:Reference> </wps:DataInputs> <wfs:GetFeature service="WFS" version="1.0.0" outputFormat="GML2" xmlns:topp="http://www.openplans.org/topp" xmlns:wfs="http://www.opengis.net/wfs" xmlns:ogc="http://www.opengis.net/ogc" xmlns:gml="http://www.opengis.net/gml" xmlns:xsi="http://www.w3.org/2001/XMLSchema-instance" xsi:schemaLocation="http://www.opengis.net/wfs http://schemas.opengis.net/wfs/1.0.0/WFS-basic.xsd"> <wfs:Query typeName="topp:states"> <wfs:PropertyName>topp:STATE_NAME</wfs:PropertyName> <wfs:PropertyName>topp:PERSONS</wfs:PropertyName> <wfs:PropertyName>the_geom</wfs:PropertyName> <ogc:Filter></pre> <div>Clear</div> <div>Send</div>



52°North SOS – Sensor Observation Service



SOS TestClient Version 2.1 - [old version](#).



For more information about the 52°North Sensor Observation Service visit <http://52north.org/sos>.
A more sophisticated SOS client is available from 52°North servers. Visit <http://sensorweb.demo.52north.org/SOSclient/> for the client and http://52north.org/communities/sensorweb/clients/Thin_SWE_Client/Version_2.0/ for documentation and further information.

Service URL:

Request Examples: 1

You can change the examples in the folder [project-directory]/52n-sos-service/src/main/webapp/examples/.

```
1 <?xml version="1.0" encoding="UTF-8"?>
2 <GetCapabilities xmlns="http://www.opengis.net/sos/1.0"
3   xmlns:ows="http://www.opengis.net/ows/1.1"
4   xmlns:ogc="http://www.opengis.net/ogc"
5   xmlns:xsi="http://www.w3.org/2001/XMLSchema-instance"
6   xsi:schemaLocation="http://www.opengis.net/sos/1.0
7     http://schemas.opengis.net/sos/1.0.0/sosGetCapabilities.xsd"
8   service="SOS">
9
10  <ows:AcceptVersions>
11    <ows:Version>1.0.0</ows:Version>
12  </ows:AcceptVersions>
13
14  <ows:Sections>
15    <ows:Section>OperationsMetadata</ows:Section>
16    <ows:Section>ServiceIdentification</ows:Section>
17    <ows:Section>ServiceProvider</ows:Section>
18    <ows:Section>Filter_Capabilities</ows:Section>
19    <ows:Section>Contents</ows:Section>
20  </ows:Sections>
21
```

2

This TestClient was successfully tested in Firefox 3.5.2, Safari 4.0.3, Opera 9.64 and InternetExplorer 8.0.6001.18702 and should work properly in Firefox 1.0 or higher, Safari 1.2 or higher, Opera 8 or higher and InternetExplorer 5 or higher. The editor is based on CodeMirror (<http://marijn.haverbeke.nl/codemirror/>).



52°North WSS - Security



Enforcement Point Management - Mozilla Firefox

File Edit View History Bookmarks Tools Help

http://localhost:8080/wss/site/manage.html

Manage Enforcement Points

Enforcement Points Create

Show 10 entries Search:

ID	Protected Service	Type	Authentication Methods	Action
sos_weather	http://v-swe.uni-muenster.de:8080/WeatherSOS/sos	SOS	htpauth noauth saml WSS	Delete
wfs_giv	http://giv-wps.uni-muenster.de:8080/geoserver/wfs	WFS	htpauth noauth saml WSS	Delete
wms_demis	http://www2.demis.nl/worldmap/wms.asp	WMS	htpauth noauth saml WSS	Delete
wps_giv	http://giv-wps.uni-muenster.de:8080/wps/WebProcessingService	WPS	htpauth noauth saml WSS	Delete

Showing 1 to 4 of 4 entries

First Previous 1 Next Last



GeoNetwork – Metadata Catalogue



Home | Contact us | Links | About | Help |

English

Username Password Login

WHAT?

WHERE?

Search

Reset Advanced Options

- Applications
- Audio/Video
- Case studies, best practices
- Conference proceedings
- Datasets
- Directories
- Interactive resources
- Maps & graphics
- Other information resources
- Photo

GeoRSS

- PROPOSAL TEMPLATE FOR VIETNAM
- DEMO
- Test
- Country Boundaries
- European Cities
- Eurasia Lakes - Inland Waters
- WRBFU. Full soil Code
- WRBLV1. Soil reference group
- WRBADJ1. First Soil Adjective Code
- WRBADJ2. 2nd Soil Adjective Code

Map viewer

Layer tree

- Base Layer
- Overlays
 - ☒ WRBLV1. Soil refer
 - ☒ Borders

WGS84 (lat/lon)

FIND INTERACTIVE MAPS, GIS DATASETS, SATELLITE IMAGERY AND RELATED APPLICATIONS

Aggregate Results matching search criteria : 1-4/4 (page 1/1), 0 selected

Select : [all](#), [none](#)

Sort by

RIVERS AND STREAMS IN NORTH AFRICA (CEDARE)

Abstract
Keywords hydrography, North Africa

ESA TIGER WEBSITE (DRAFT FOR DEMO)



pycsw – Metadata Catalogue



```
http://catalog.dev.g...sotc211.org/2005/gmd
<cs:SearchStatus version="2.0.2" xsi:schemaLocation="http://www.opengis.net
/cat/csw/2.0.2 http://schemas.opengis.net/csw/2.0.2/CSW-discovery.xsd">
  <cs:SearchResults timestamp="2012-02-09T20:23:28Z"/>
  <cs:SearchResults numberOfRecordsReturned="7" nextRecord="0"
  numberOfRecordsMatched="7" recordSchema="http://www.isotc211.org/2005/gmd"
  elementSet="full">
    <gmd:MD_Metadata xsi:schemaLocation="http://www.isotc211.org/2005/gmd
    http://www.isotc211.org/2005/gmd/gmd.xsd">
      <gmd:fileIdentifier>
        <gco:CharacterString>c1ae3bf1-bbb3-4081-
        bc95-429adf0e797</gco:CharacterString>
      </gmd:fileIdentifier>
      <gmd:language>
        <gco:CharacterString>eng</gco:CharacterString>
      </gmd:language>
      <gmd:characterSet>
        <gmd:MD_CharacterSetCode codeSpace="ISO19115/19115"
        code="UTF-8" codeAuthority="ISO 10415:2000-01-01"
        </gmd:MD_CharacterSetCode>
      </gmd:characterSet>
    </gmd:MD_Metadata>
  </cs:SearchResults>
</cs:SearchStatus>
```

File Tools Window Help

★ Edition: d9e0fa4f-338d-11e0-b069-001de07e515988888 - roadrunner ambush locations

HTML ISO19115 NEM Profile CORE Profile INSPIRE Profile WISE Profile

Metadata standard version
Dataset URI
Spatial representation information
Reference System information
Metadata extension information
Identification information
MD_DataIdentification
Citation
CI_Citation
Title
Alternate title
Date
Edition
Edition date
Identification

(360) Identification
Information.MD_DataIdentification.Citation.CI_Cita

Element definition:
name by which the cited resource is known

roadrunner ambush locations

Edit Save Cancel

Server response

Property	Value
Identifier	077077ea-2d71-4614-9763-268b6b1d2f6e
Title	CA
Abstract	No abstract provided
Subjects	United States of America
Creator	
Contributor	
Publisher	
Modified	
Language	eng
Format	
Rights	
Bounding box	-92.25, 7.21, -77.2, 18.49

Close

Bounding box

90

-180 180

-90

From map canvas

Set global

Search

Show: 7 from 7

Type	Title	Identifier
dataset	NIC_Rain_1000y...	c1ae3bf1-bbb3-4081-bc95-429adf0e...
dataset	NIC_0.5s_200y	a75e88d1-dbd9-4f6e-b037-e4bf9321...
dataset	nic_admin	d11237c1-1197-4ffe-b4a0-3b805e06...
dataset	CA	077077ea-2d71-4614-9763-268b6b1...
dataset	distrits	3335b8c4-da2c-4490-9879-ca3442ac...

Abstract

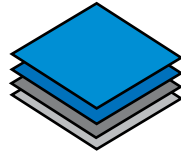
No abstract provided

Add to WMS list Open URL Metadata View XML

Close

Web Mapping

OpenLayers



MapFish



Geomajas



Mapbender



GeoMOOSE

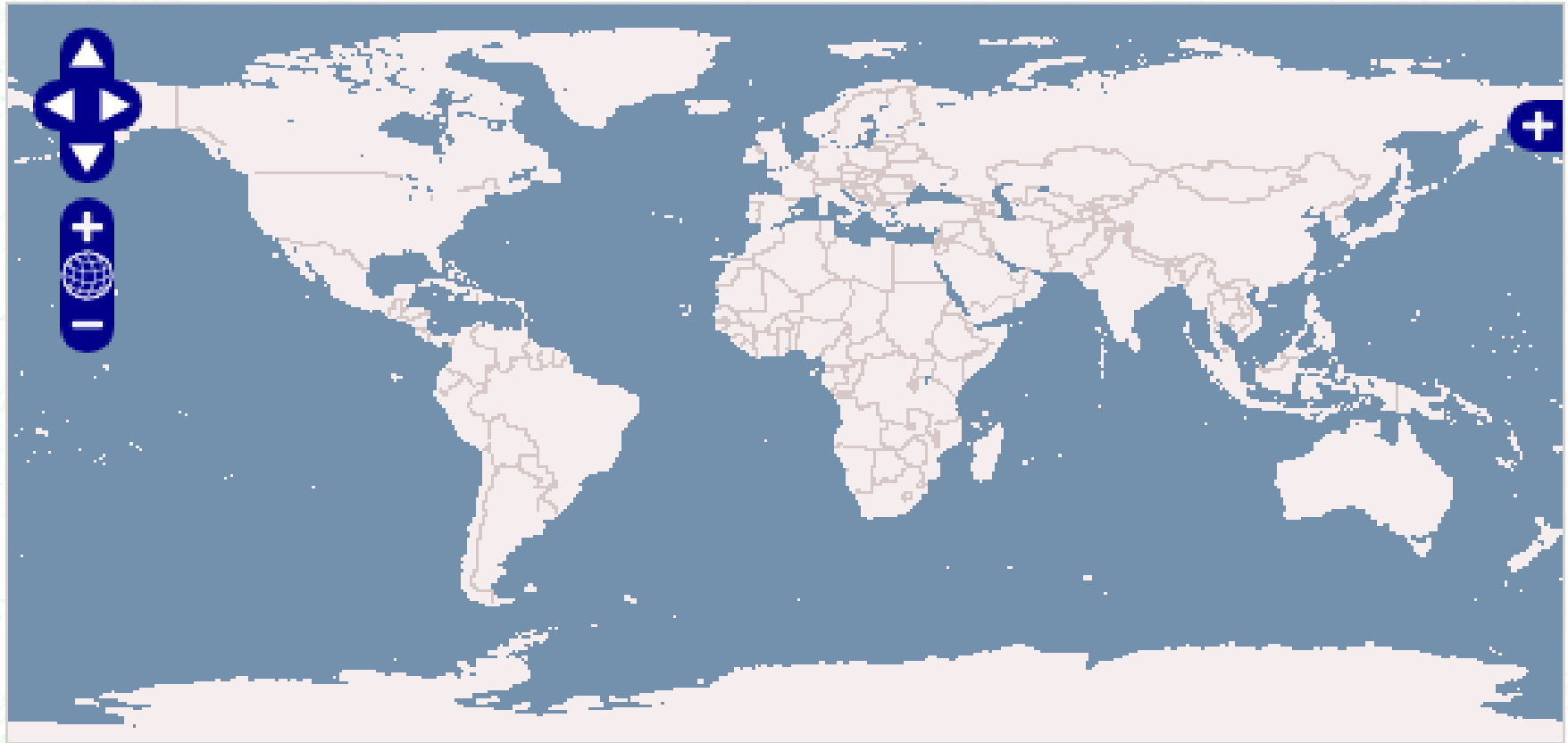


Web Mapping

<http://live.osgeo.org>



OpenLayers – Browser client



<http://live.osgeo.org>



MapFish – Browser Client



Schweizerische Eidgenossenschaft
Confédération suisse
Confederazione Svizzera
Confederaziun svizra

Federal Administration admin.ch

Federal Department of Economic Affairs FDEA

Federal veterinary office FVO - InfoSM

[Kontakt](#) | [Help](#)

[Deutsch](#) | [Français](#)
[Italiano](#) | [English](#)

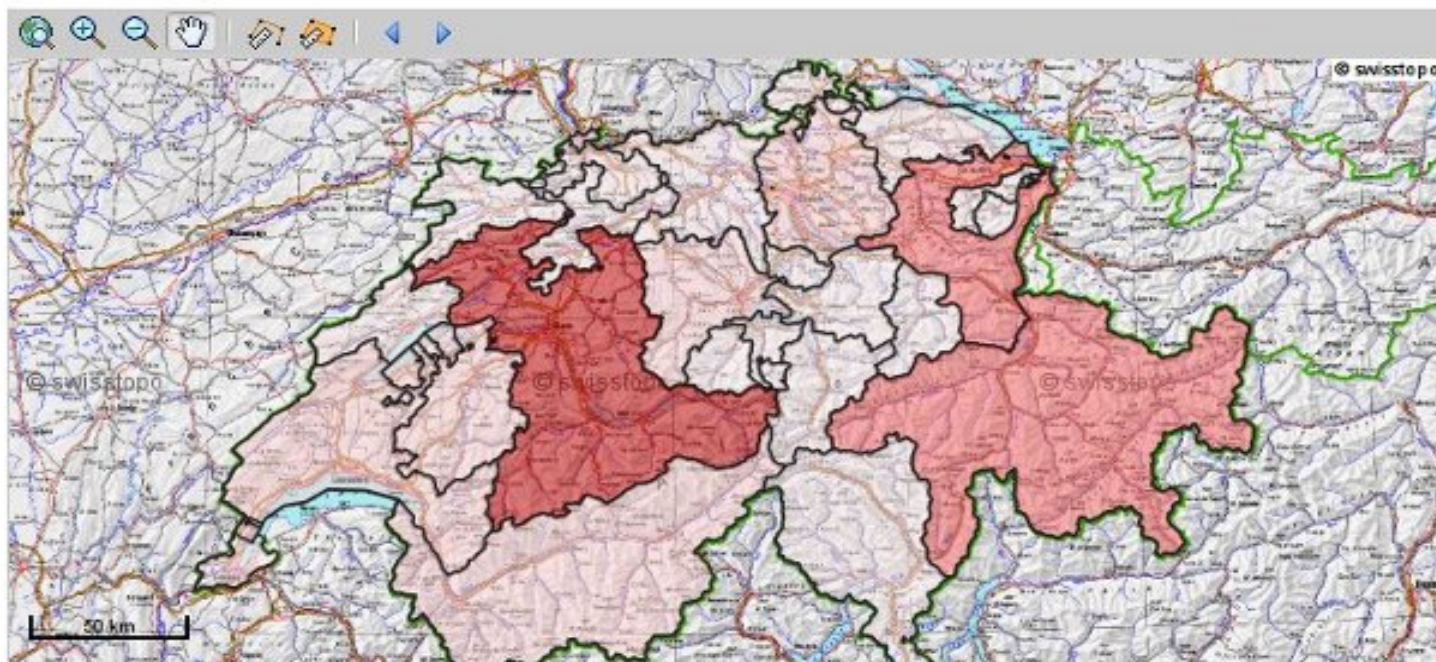
Layer Tree

- ☐ Statistiken
- ☐ Aggregierte Daten
- ☐ Thematiken
- ☐ Background

[Print](#)

[Overview Map](#)

InfoSM > Geographic analysis



Scale = 1 : 6'500'000
Koordinaten (m): 718825, 165625

Federal veterinary office FVO - InfoSM
[Contact](#) | [Legal framework](#)



Mapbender – Geoportal Framework



gui_digitize - presented by Mapbender - Mozilla Firefox

File Bearbeiten Ansicht Chronik Lesezeichen Extras Hilfe

http://localhost/mapbender/frames/index.php?PHPSESSID=c0406bba3c53af5 Mapbender

gui_digitize - presented by Map...

Mapbender

Demis World Map

Maps
Legend
Print
Search
Imprint
Digitize

FOSS4G Barcelona (point)
sand (polygon)
OSGeoLive (polygon)

Search results

edit all	
FOSS4G Barcelona	
little boat	
forest	
sand	
OSGeoLive	
water	

Fertig



Geomajas – Browser Client



Geomajas GWT Showcase

Developer Console

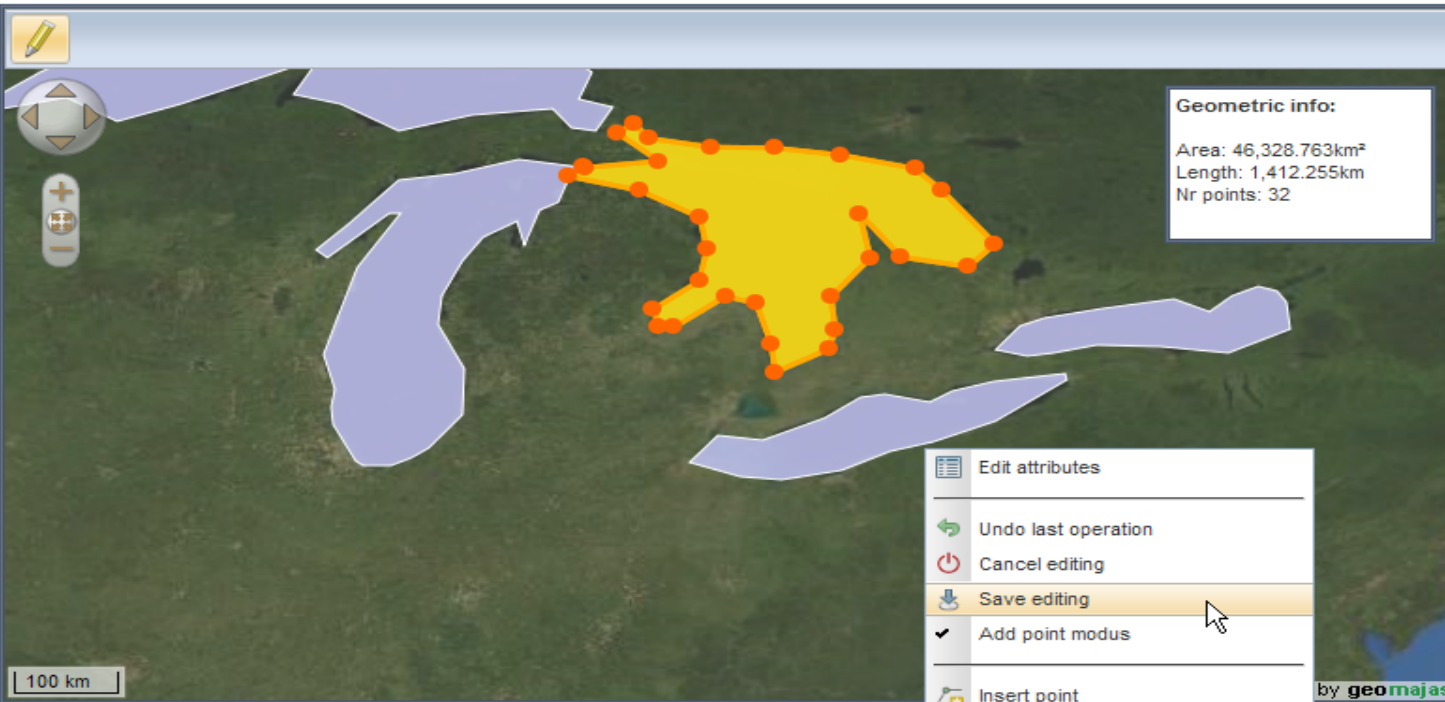
Graphite

Introduction

Edit a Polygon layer

Locale : English

View Source



Description

This example demonstrates the ability to edit a Polygon layer. Just activate the editing tool in the toolbar, and start!

Note that most actions are triggered from the right mouse menu.

Also note that editing is restricted to the layer's bounds.

Create a new feature


Edit a feature

Delete a feature

Create donut polygon

How do I create a new feature?

Prerequisites

1. Enable editing mode () in the tool bar.
2. Select the layer you want to create in. This can normally be done in the layer control. **In this showcase, the vector layer is already selected.**

Hint: you can only create new features in vector-layers.

Creating a new feature

- 1 **Start:** Simply click the RIGHT mouse button on the map, and a menu will appear. At the top of this menu, you will see "Create new feature". Select



GeoMOOSE – GIS Portal




GeoMOOSE 2.2

Welcome to GeoMOOSE — GeoM... x GeoMOOSE 2.2 x +

http://www.geomoose.org/demo/geomoose2/geom ☆ ↻ Google

SPNet: City/Cou... Novell WebAccess 7-Day STPL CAP Mission Ima... 7-Day Woodville » Bookmarks

 **MOOSEMAPPING**

← → ↺ ↻ ⓘ 📐 📏 🔍 Search Parcels 🖨️ Print 📄 🚗 🌐 Sketch Tools ↓

Jump To: [dropdown]

Catalog Information Custom

- County Layers
 - ☐ Metro Water
 - ☐ Watersheds
 - ☐ DNR WMS
 - ☐ Pipelines
 - ☐ Fire Stations
 - ☒ Parcels
 - ☐ Pipelines & Parcels

Dakota

Hampton

New Market

Randolph

Rice

PIN: 160220001201
Owner: Moira Glass
[View Parcel Report](#)

GeoMOOSE 2.2 X,Y: 496072.60766, 4929873.47673 Lat, Lon: 44.522, -93.049 USNG: 15TVK96072987 Scale:

Find: pass Next Previous Highlight all Match case

Desktop Applications

AtlasStyler



Grass GIS



Geopublisher



gvSig



Kosmo



uDig



SAGA



OpenJUMP



osgEarth

OSGEARTH

OSSIM



Quantum GIS



MapWindow

MAPWINDOW

Desktop Applications

<http://live.osgeo.org>



GRASS – Desktop GIS



GRASS GIS Map Display: 1 - Location: nc_spm_08

File Config Raster Vector Imagery Volumes

Display 1

- ☒ soils_wake@PERMANENT (opacity: 40%)
- ☒ roadsmajor@PERMANENT (opacity: 100%)
- ☒ slope@PERMANENT (opacity: 100%)

GRASS GIS Attribute Table Manager - <roadsmajor@PERMANENT>

1 / Table roadsmajor

Attribute data - right-click to edit/manage records

cat	MAJORRDS_	ROAD_NAME	MULTI	PROPYE	OBJECTID	SHAPE_LEN
10	10	NC-98	no	0	10	8446.822876
11	11	NC-98	no	0	11	14876.323626
12	12	NC-98	no	0	12	11610.268716
13	13		no	0	13	11828.121704
14	14		no	0	14	5524.875869
15	15	NC-98	no	0	15	4739.53603
16	16	NC-96	no	0	16	8586.517385
17	17				17	12070.000000
18	18	NC-50			18	891
19	19	US-401			19	882
20	20	NC-96			20	831
21	21				21	801

SQL Query

☒ Simple SELECT * FROM roadsmajor

☐ Advanced SELECT * FROM roadsmajor

Browse data Manage tables Manage data

635793.23, 225259.10

Edit selected record
Insert new record
Delete selected record(s)
Delete all records
Select all
Deselect all
Highlight selected features
Highlight selected features and zoom
Extract selected features
Delete selected features
Reload

Apply SQL Builder



Quantum GIS – Desktop GIS



Applications Places ? 04:58

Quantum GIS 1.4.0-Enceladus - QGIS-NaturalEarth-Example

File Edit View Layer Settings Plugins Vector Help

Layers

- ☒ 10m_populated_places_si...
 - 0.000 - 10668.000
 - 10668.000 - 42849.000
 - 42849.000 - 108420.000
 - 108420.000 - 327004.000
 - 327004.000 - 35676000.000
- ☐ Water
- ☐ 10m_rivers_lake_center...
- ☐ 10m_lakes
- ☐ 10m_ocean
- ☒ HYP_50M_SR_W
- ☐ 10m_land

Coordinate: 40.4,108.5 Scale: 1:208428636 Render

Quantum GIS 1.4.0-En...



gvSIG – Desktop GIS



File Show View Table Map Window Help

View : Untitled - 0

Communications

- Highway
- Highway (alt)
- National
- Regional 1
- Regional 2
- Regional 3
- Railway
- VIAL
- Tram

Municipalities

Blue Marble

Map : Untitled - 0

Table: Table of attributes...

NOMBRE	OBSERVA...	TIPO
LR-493		CAUT3
Acceso a Navajún		VIAL
Acceso a Navajún		VIAL
LR-284		CAUT2
LR-493		CAUT3
Acceso a Navajún		VIAL
LR-388		CAUT3
LR-388		CAUT3
Acceso a Navajún		VIAL
LR-284		CAUT2
LR-490		CAUT3

SEXTANTE - 292 Algorithms

SEXTANTE

Algorithms

- Basic hydrological analysis
- Basic tools for raster layers
- Buffers
- Calculus tools for raster layer
- Cost, distances and routes
- Fire modeling
- Focal statistics
- Fuzzy logic
- Geomorphometry and terrain analysis
- Geosocial

Search

Sample map

Communications

- Highway
- Highway (alt)
- National
- Regional 1
- Regional 2
- Regional 3
- Railway
- VIAL
- Tram

Municipalities



uDig: User-friendly Desktop Internet GIS



uDig

File Edit Navigation Layer Map Data Window Help

Projects Bookmarks

User Friendly Desktop Internet GIS

- south africa
- south asia

Layers

- ☒ Scalebar
- ☒ Cities
- ☒ Countries
- ☒ Grid
- ☒ Blue Marble
- ☒ Clouds

User Friendly Desktop Internet GIS

India Bangladesh Myanmar Laos Vietnam Thailand Cambodia Philippines Taiwan China

600 km

1:30,811,600 WGS 84 104.4, 25.6

Catalog Web Search Table Location Style

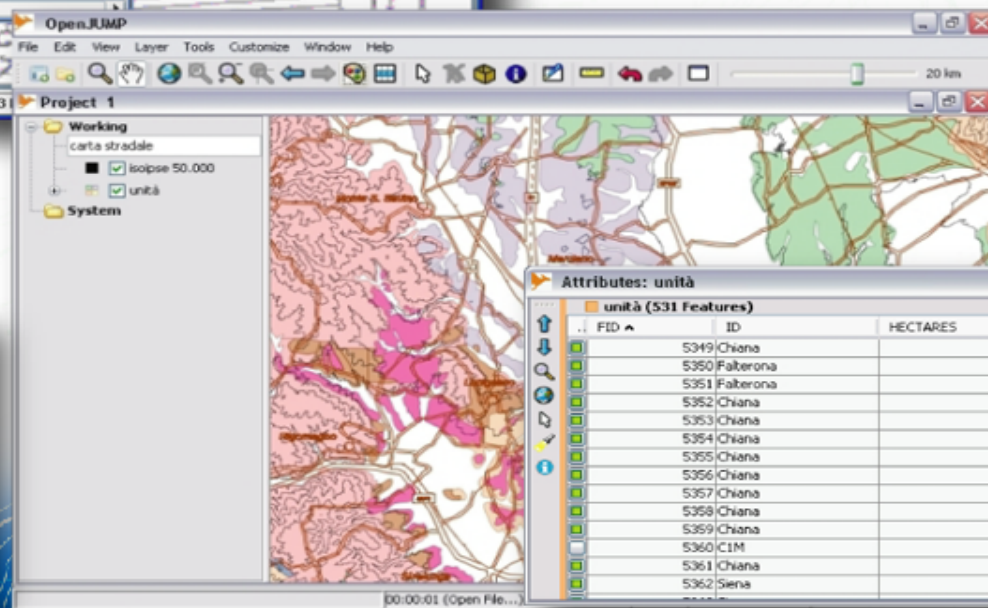
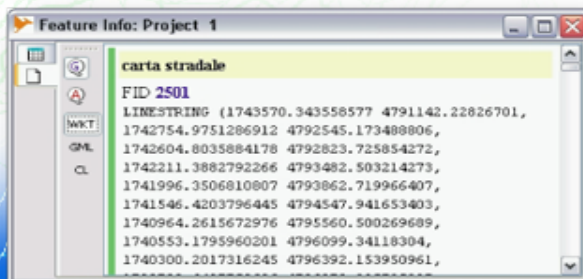
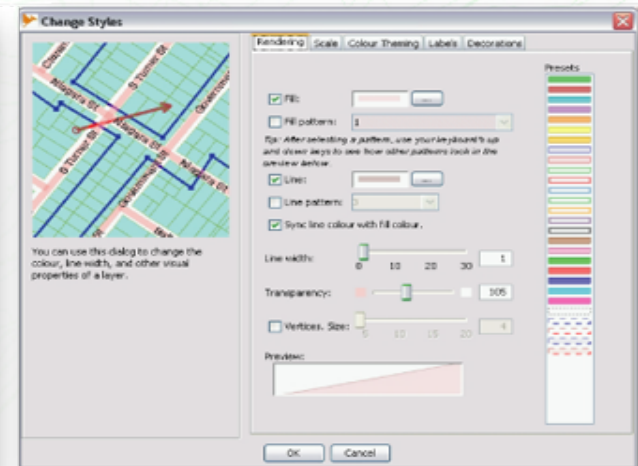
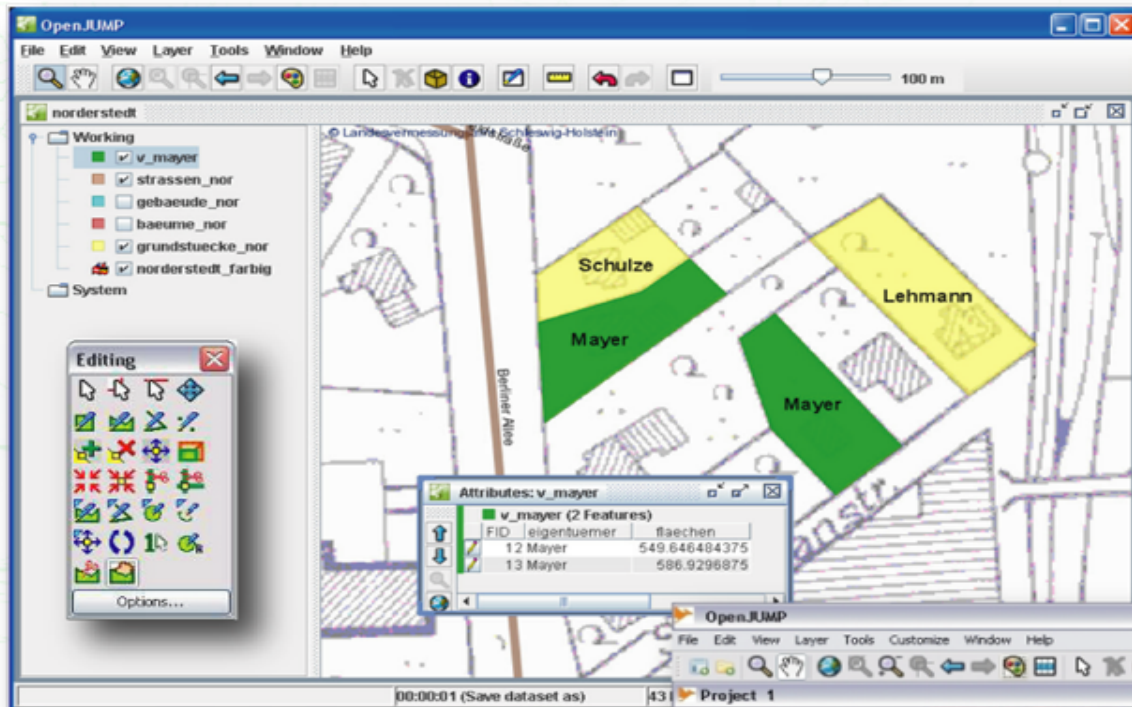
Any LANDLOCKED = "Y" All

Features Selected: 44

CNTRY_NAME	LONG_NAME	SOVEREIGN	POP_CNTRY	CURR_TYPE	CURR_C...	LANDLOCKED	SQKM
Laos	Laos	Laos	4722773	Kip	LAK	Y	230602.78
Latvia	Latvia	Latvia	2690291	Lat	LVL	N	64324.77
Lebanon	Lebanon	Lebanon	2942959	Pound	LBP	N	10217.3



OpenJUMP GIS





Kosmo – Desktop GIS



Applications Places 13:29

Kosmo - Open Geographical Information System - v.2.0 (20100701) [Barcelona - OSM data]

File Edit View Tools Sextante Window Help

Scale 1: 2,655

Working

- ☐ planet_osm_line
- ☒ planet_osm_point
- ☒ planet_osm_polygon
- ☒ planet_osm_roads
- ☒ Servidor raster ICC

Layers

Bookmark manager

Origen 99%

Babilonia
Kentucky Fried Chicken
REPSOL

Sagrada Familia

Plaça de Gaudí

Sagrada Familia

Sagrada Familia

Sagrada Familia

Templo Expiatorio de la Sagrada Familia

Plaça de la Sagrada Familia

© Institut Cartogràfic de Catalunya

00:00:01 (Save Project) (2.176684 ; 41.405318)

Kosmo - Open Geogra...



SAGA – Desktop GIS



SAGA Desktop GIS interface showing multiple map windows and a settings panel.

Workspace:

- Module Libraries
 - Contributions - A. Perego
 - Contributions - T. Wutzler
 - Geostatistics - Grids
 - Geostatistics - Kriging
 - Geostatistics - Points
 - Grid - Analysis
 - Grid - Calculus
 - Grid - Discretisation
 - Grid - Filter
 - Grid - Gridding
 - Grid - Spline Interpolation
 - Grid - Tools
 - Grid - Visualisation
 - Import GPS Data
 - Import/Export - DXF
 - Import/Export - ESRI E00
 - Import/Export - GDAL/OGR
 - Import/Export - GRIB Files
 - Import/Export - Grids
 - Import/Export - Images
 - Import/Export - LAS
 - Import/Export - Shapes
 - Import/Export - Tables
 - Import/Export - Tables using ODBC
 - Lectures - Introducing Module P
 - Point Cloud - Tools
 - Point Cloud - Viewer
 - Projection - GeoTRANS
 - Projection - Georeferencing
 - Projection - Proj.4
 - Recreations - Fractals
 - Recreations - Games
 - Shapes - Grid
 - Shapes - Lines
 - Shapes - Lines (extended)
 - Shapes - Points

Map Windows:

- 04. Map: Topographic map with a grid overlay.
- 03. Map: Satellite image with a grid overlay.
- 01. Map: Topographic map with labels (Börsen, Göttingen, Waahe, Landershausen, Ebergöt, Kreber, Börsen).
- 3D-View [02. Map]: 3D perspective view of the terrain.

Messages:

```
[2010-07-26/14:09:55] Load grid: Z:\tmp\forest_of_goettingen\landsat_band_07.dgm...okay
[2010-07-26/14:09:55] Load grid: Z:\tmp\forest_of_goettingen\landsat_band_rgb_composite.dgm...okay
[2010-07-26/14:09:55] Load grid: Z:\tmp\forest_of_goettingen\landsat_classification.dgm...okay
[2010-07-26/14:09:55] Load grid: Z:\tmp\forest_of_goettingen\landsat_band_08.dgm...okay
```

01. Places Settings:

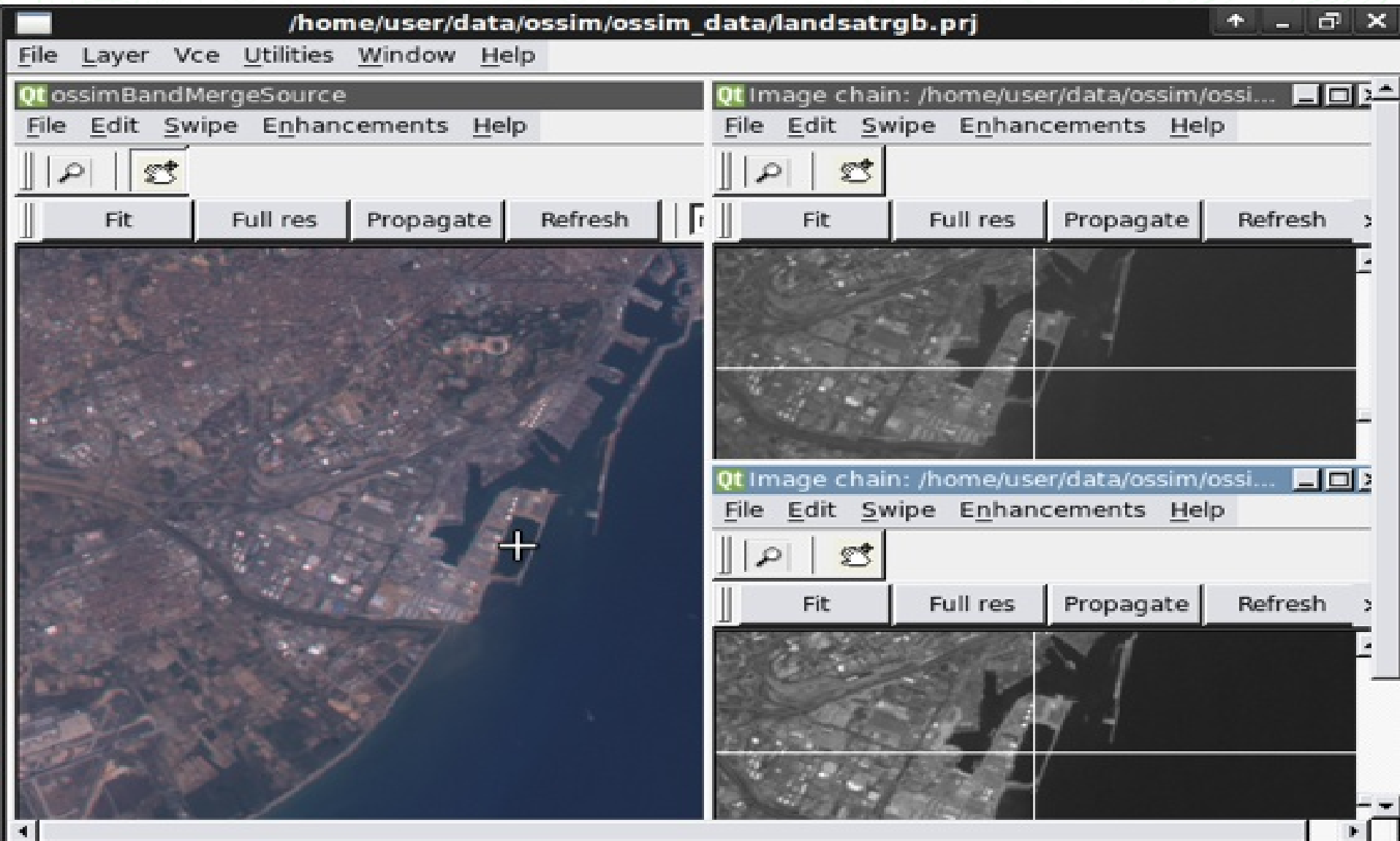
- Options
 - General
 - Name: Places
 - Show Legend: ☒
 - Display
 - Chart: 13 parameters
 - Transparency [%]: 0
 - Fill Style: Opaque
 - Outline: ☐
 - Outline Color: Black
 - Outline Size: 0
 - Symbol Type: circle
 - Symbol Image:
 - Display: Visibility
 - Show Always: ☒
 - Scale Dependent: 0; 1000
 - Display: Color Classification
 - Type: Unique Symbol
 - Attribute: ID
 - Unique Symbol
 - Color: Red
 - Lookup Table
 - Table: Table (columns: 5, rows: 10)
 - Graduated Color
 - Colors: 10 colors
 - Value Range: 0; 0
 - Mode: Linear
 - Logarithmic Scale: 1
 - Display: Label
 - Attribute: ID

Buttons: Apply, Restore, Load, Save, Settings, Description, Leger

Status Bar: 01. Places X563337.026432 Y5703828.290749 Z



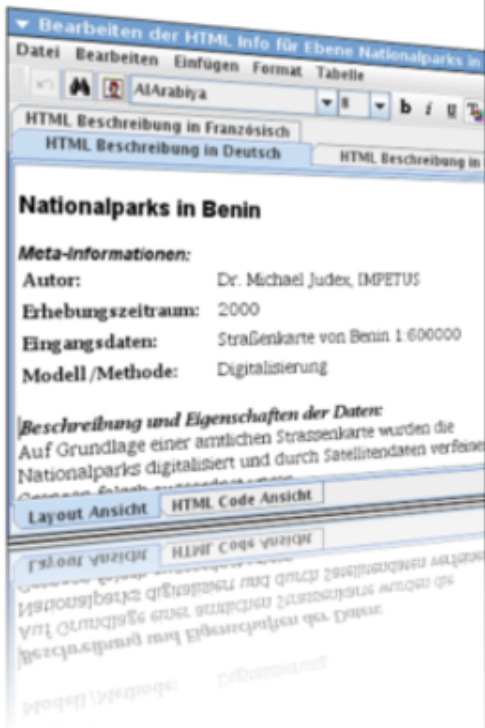
OSSIM - Image Processing





osgEarth - 3 Dimension Terrain Rendering





The screenshot displays the 'Geopublisher' window of the IMPETUS Atlas 2.0 software. The window is divided into several panes:

- Top Bar:** Shows the application name 'Geopublisher - Atlas "Digitaler IMPETUS Atlas 2.0"' and standard window controls.
- Left Panel:** Contains a 'Datapool (Layers, PDFs, Videos, ...)' section with a list of data layers. Each layer entry includes a thumbnail, a name (e.g., 'Oberes Dräa-Einzu...'), a CRS (e.g., 'Lambert...'), and a size (e.g., '0,1Mb').
- Right Panel:** Contains a 'Thematische Karten' (Thematic Maps) section with a list of maps. Each map entry includes a thumbnail, a title (e.g., 'Digitales Gel'), a CRS (e.g., 'Lambert IMPETU'), and a size (e.g., '25,8Mb').
- Bottom Panel:** Contains a 'Menüstruktur' (Menu Structure) section showing a hierarchical tree of menu items (e.g., 'IMPETUS Atlas', 'Marokko', 'Naturräumliche Karten').

Buttons for 'Spaltennamen bearbeiten' (Edit Column Names), 'Bearbeiten' (Edit), '+ Neu' (New), and 'Entfernen' (Remove) are visible at the bottom of the main panes.





AtlasStyler – Desktop Style Editor



Bezirke - Dortmund: Bevölkerungsstand

Symbole **A Beschriftung**

Wählen Sie die Art der Symbolisierung:

Mengen: Mengen farblich darstellen

Mengen farblich darstellen.

Attribut-Spalten: Werte-Attribut: HWB_GES (Double) Normalisierung: -

Klassifikation: Art der Klassifikation: Manuelle Grenzen Klassen: 5 Klassifikation

Farbpalette: [Color Bar] Vorlage: [Color Box]

Farbe	Bereich	Beschriftung
[Color]	0,000 -> 5000,000	< 5000
[Color]	5000,000 -> 10000,000	5001 - 10000
[Color]	10000,000 -> 15000,000	10001 - 15000

Klassifikation

Methode: Manuelle Grenzen

Klassen: 5

Daten: Ausschlussfilter... Attributtabelle anzeigen

Spalten: 15 Standardabweichung anzeigen Mittelwert anzeigen

Deskriptive Statistik:

Anzahl:	62,000
Minimum:	460,000
Maximum:	25366,000
Summe:	583945,0...
arithm. Mi...	9418,468
Median:	8038,500
Standard ...	6440,410

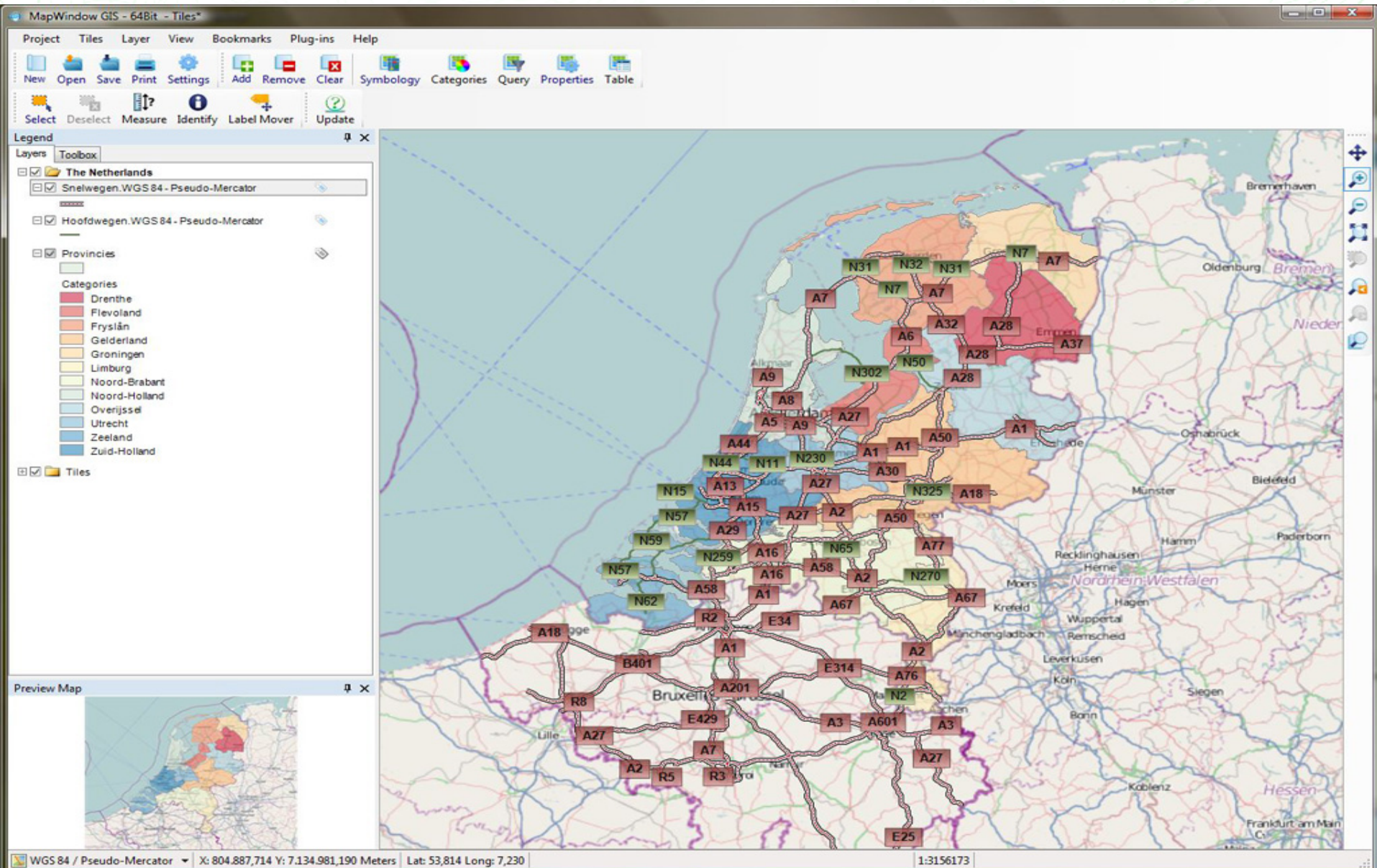
Klassengrenzen:

#	Klassengrenzen:
0	0,000
1	5000,000
2	10000,000
3	15000,000
4	20000,000
5	25366,000

AtlasStyler

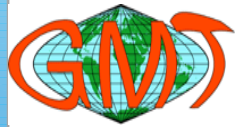


MapWindow – for Windows



Spatial Tools

GMT



R



ORFEO Toolbox



Mapnik



GeoKettle

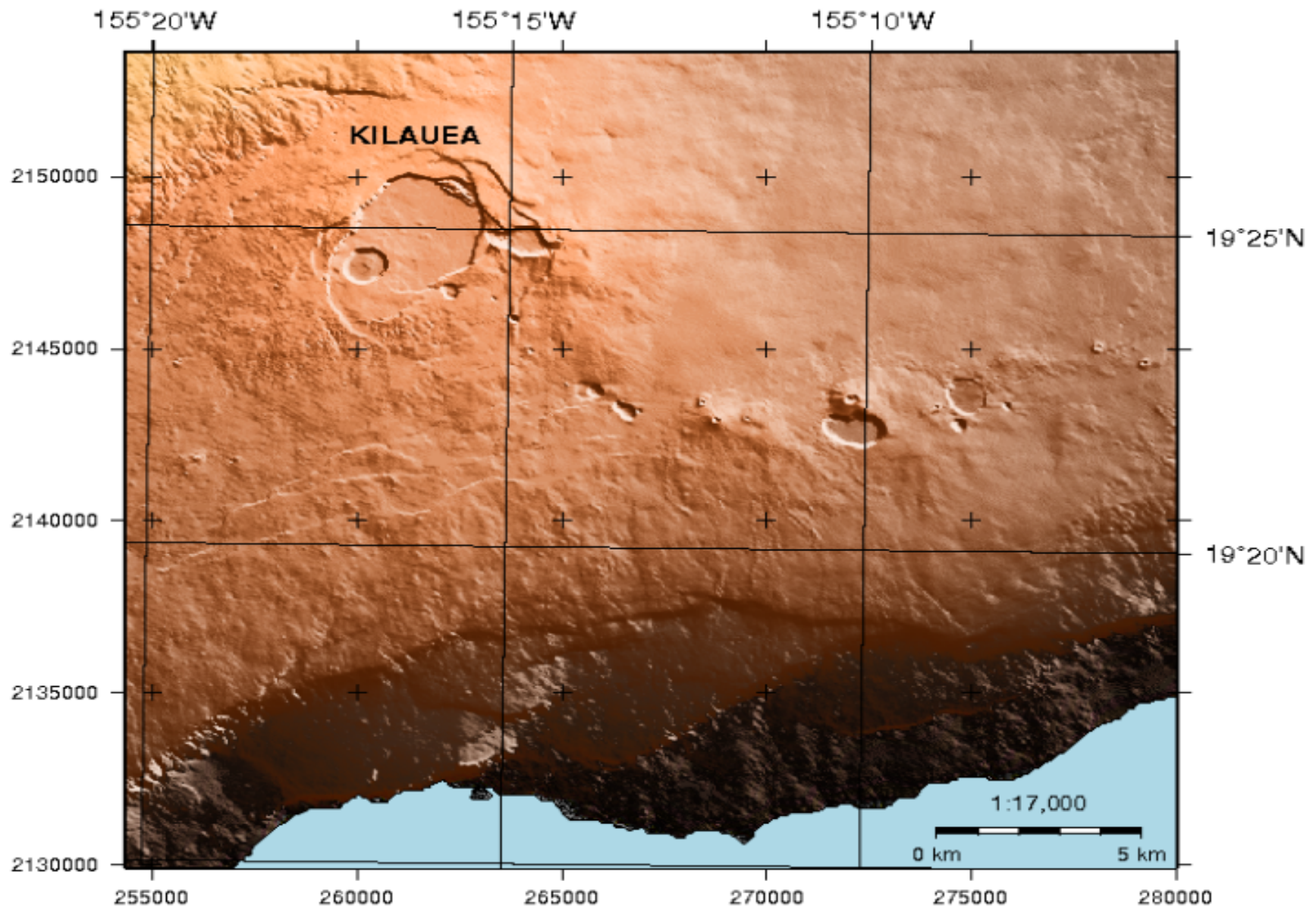


Spatial Tools

<http://live.osgeo.org>

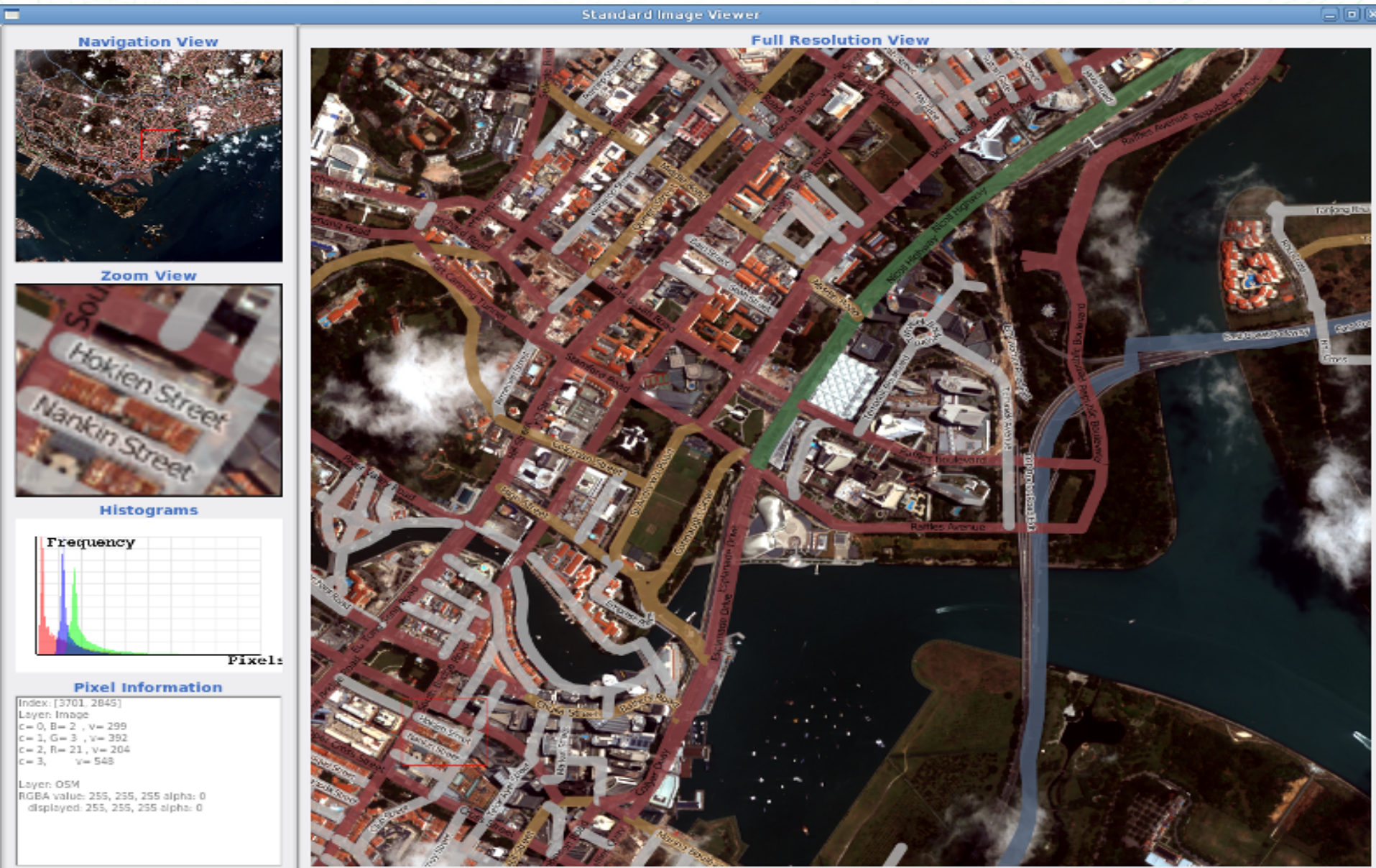


GMT – Generic Mapping Tools



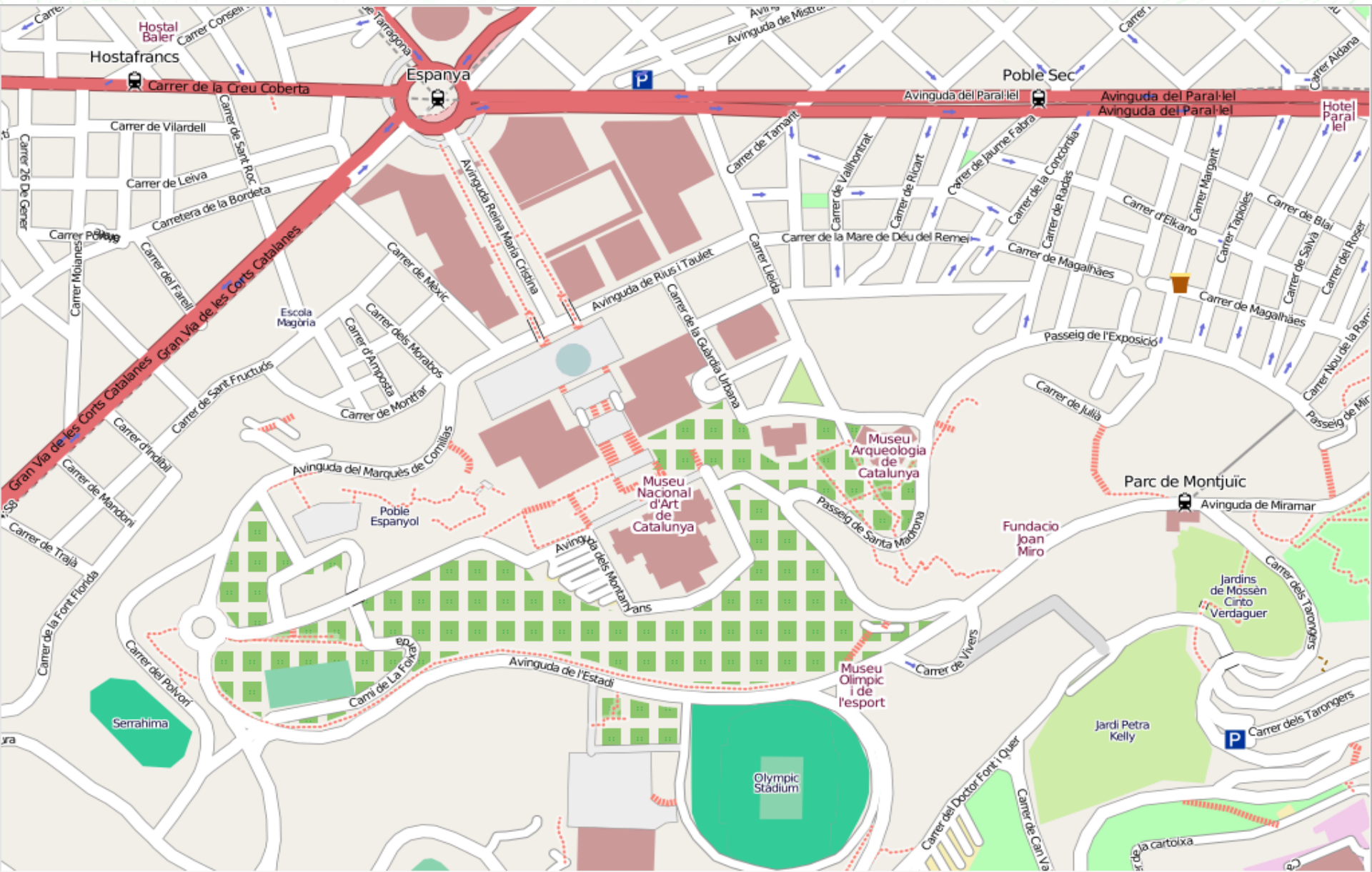


ORFEO Toolbox: Image Processing





Mapnik – Cartographic Rendering





R – Statistical Programing



```
Applications Places 22:33
Terminal - user@osgeolive: ~
File Edit View Terminal Go Help
> plot(longleaf, markscale=0.09, main="markscale=0.09")
      0  20  40  60  80
0.0 1.8 3.6 5.4 7.2

> par(opa)

> Z <- as.im(function(x,y) { r <- sqrt(x^2+y^2); r * exp(-
r) },
+         owin(c(-5,5),c(-5,5)))

> plot(Z, main="pixel image: image plot")
Hit <Return> to see next plot:

> plot(Z, main="pixel image: image plot (heat colours)", c
ol=heat.colors(256))
Hit <Return> to see next plot:

> contour(Z, main="pixel image: contour plot", axes=FALSE)
Hit <Return> to see next plot:

> plot(Z, main="pixel image: image + contour plot")
Hit <Return> to see next plot:

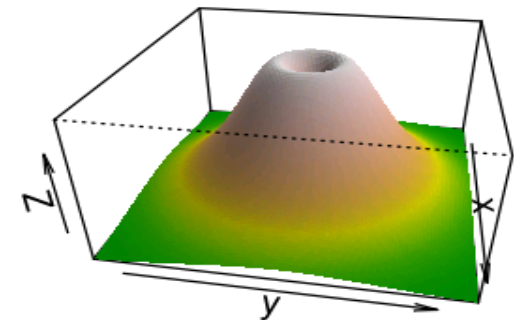
> contour(Z, add=TRUE)

> persp(Z, colmap=terrain.colors(128), shade=0.3, phi=30,t
heta=100,
+       main="pixel image: perspective plot")
Hit <Return> to see next plot:

> ct <- colourmap(rainbow(20), breaks=seq(-1,1,length=21))

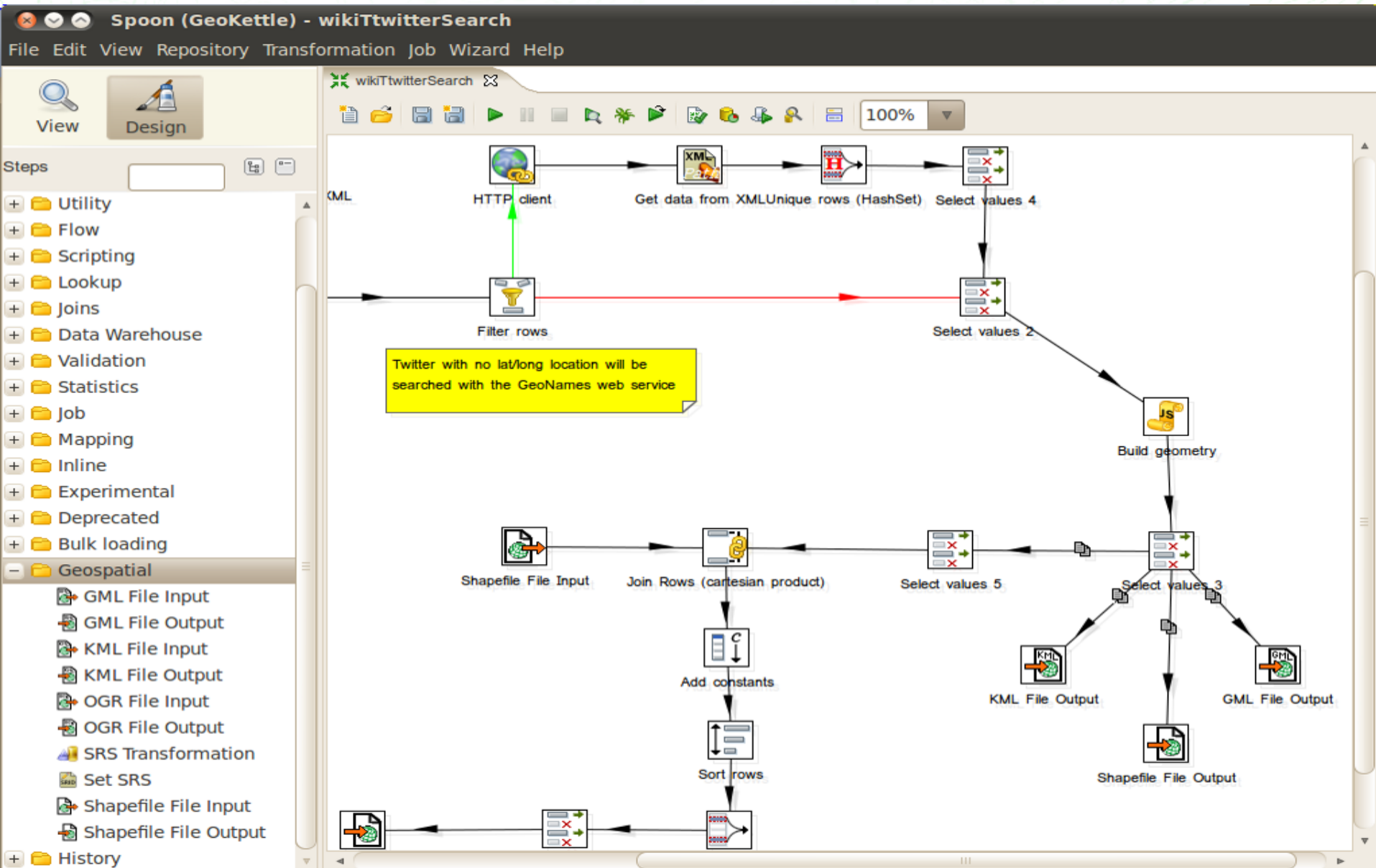
> plot(ct, main="Colour map for real numbers")
Hit <Return> to see next plot: █
```

pixel image: perspective plot





GeoKettle – Extract Transform Load (ETL)



Navigation & Maps

Marble



Prune



GpsDrive



OpenCPN



Viking



zyGrib



Navigation & Maps

<http://live.osgeo.org>



Marble – Spinning Globe



Historical Map 1689 - Marble Desktop Globe


File Edit View Settings Help

Navigation


Legend




Populated Places


 Town

Terrain


 Mountain

Surface

 River

 Lake

☒ **Places of Interest**

 Geographic Pole

☐ **Accurate Coastline**

☐ **Coordinate Grid**

Learn more about this map at our [Marble Website](#).



Map View



0 km 4000 8000

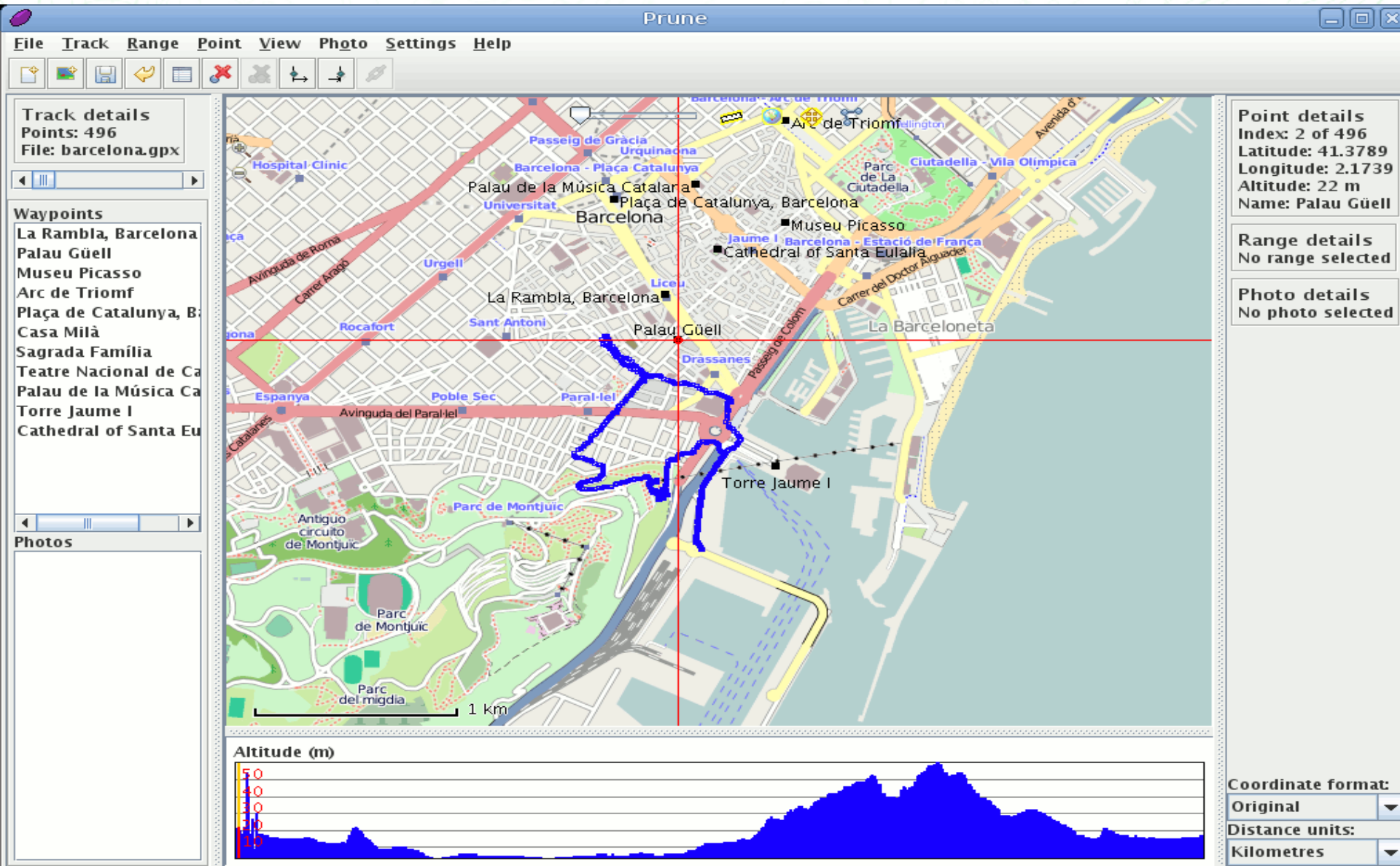
Position: not available

Altitude: 5.895,6 km

Tile Zoom Level: 1

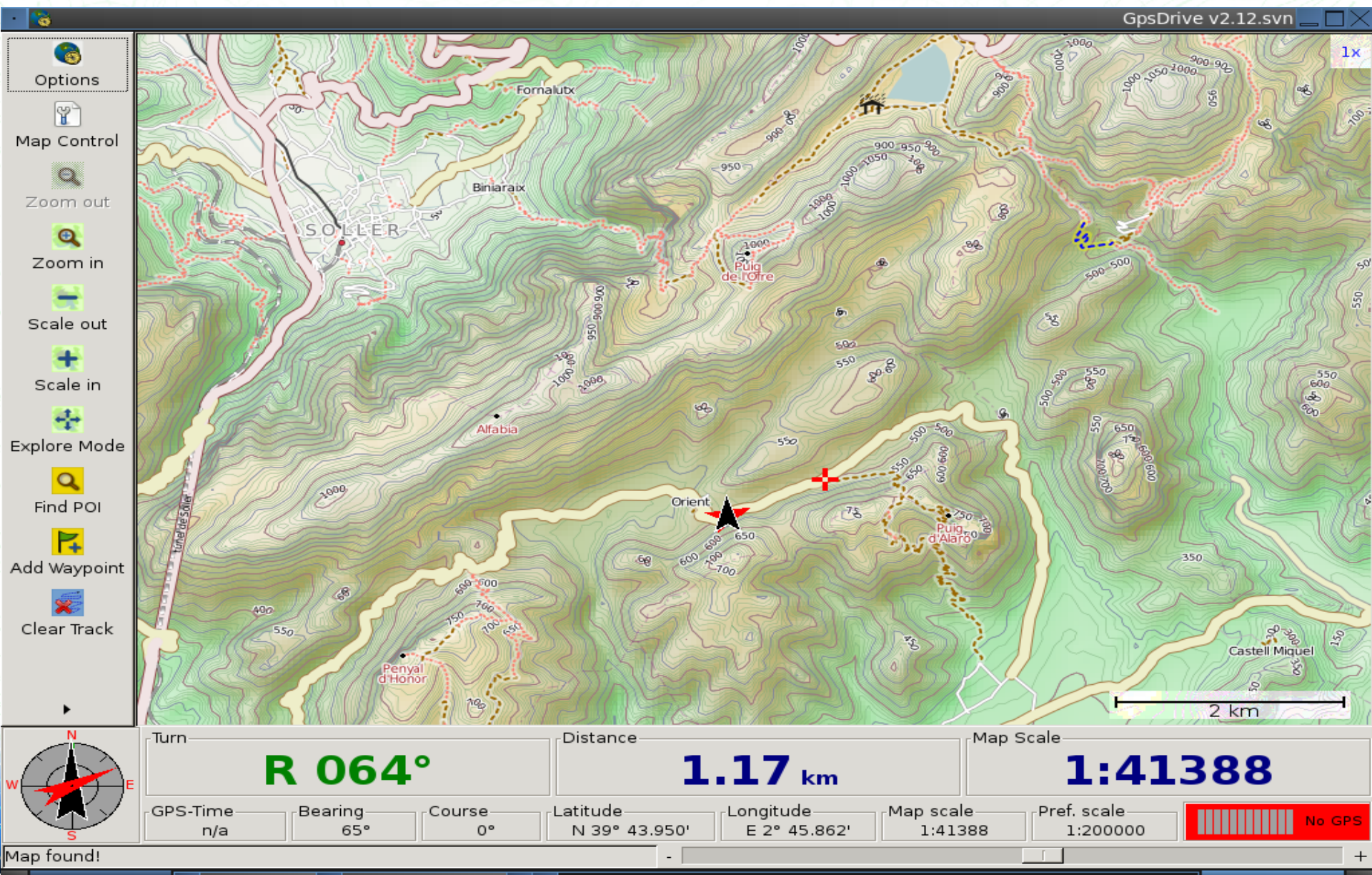


Prune – GPS Track Editing



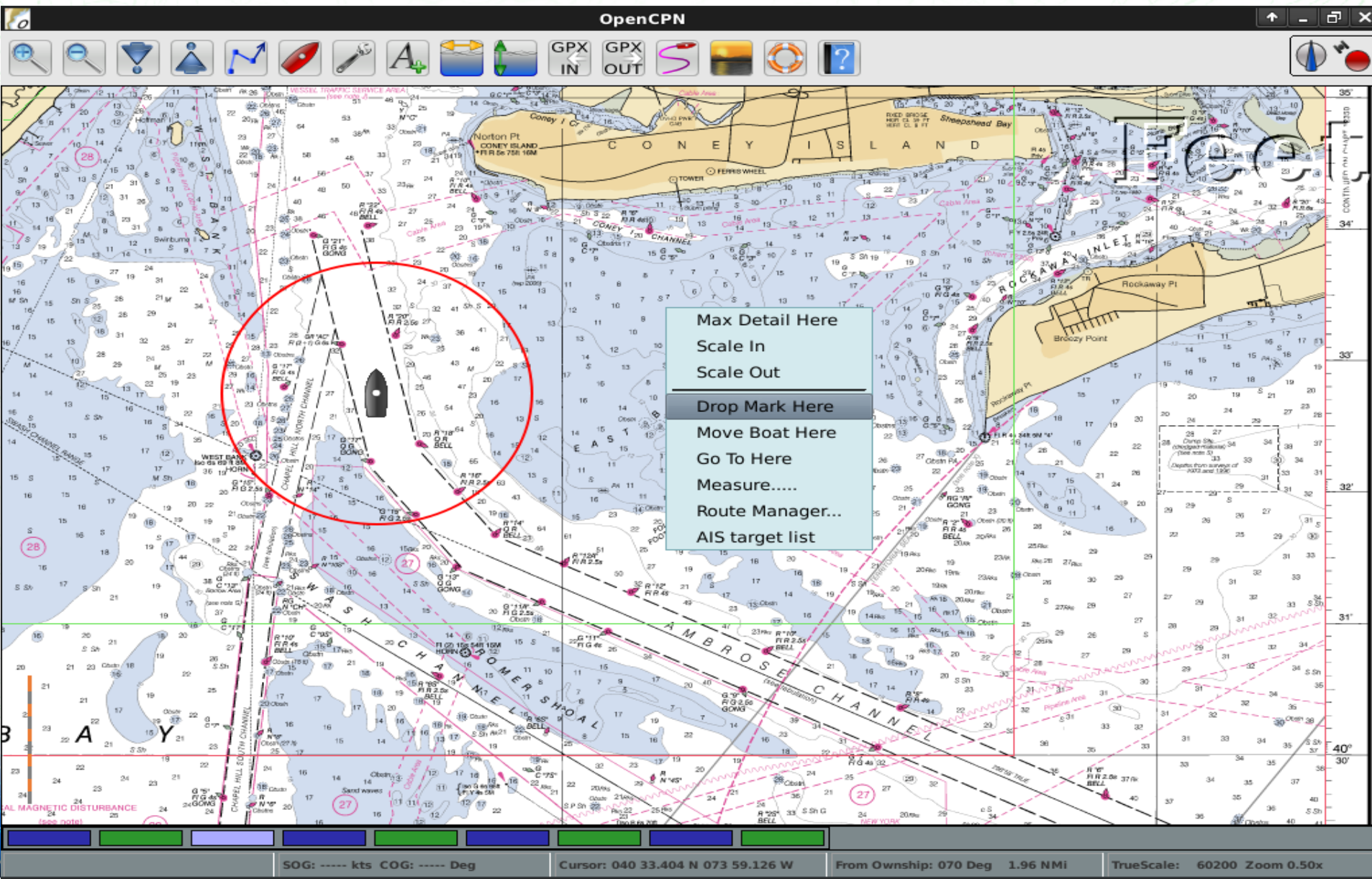


GpsDrive – GPS Navigation





OpenCPN – Marine GPS Navigation





Viking – GPS Navigation



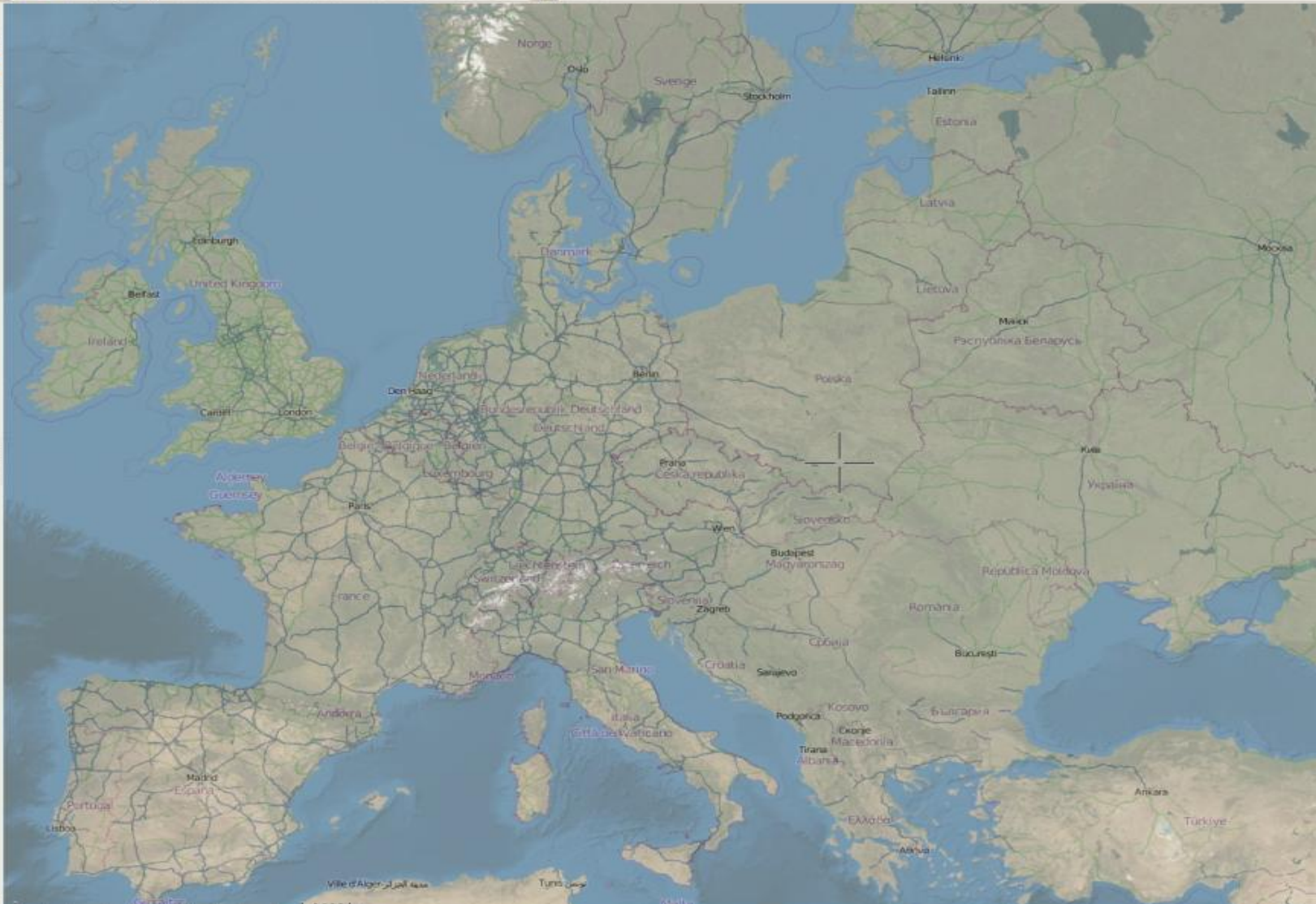
base.viking - Viking

Fichier Édition Vue Calques Outils Aide



Nom du calque

Calque maître		<input checked="" type="checkbox"/>
Mapnik		<input checked="" type="checkbox"/>
OSM		<input type="checkbox"/>
BlueMarble		<input checked="" type="checkbox"/>
OpenAerialMaps		<input type="checkbox"/>
DEM		<input type="checkbox"/>

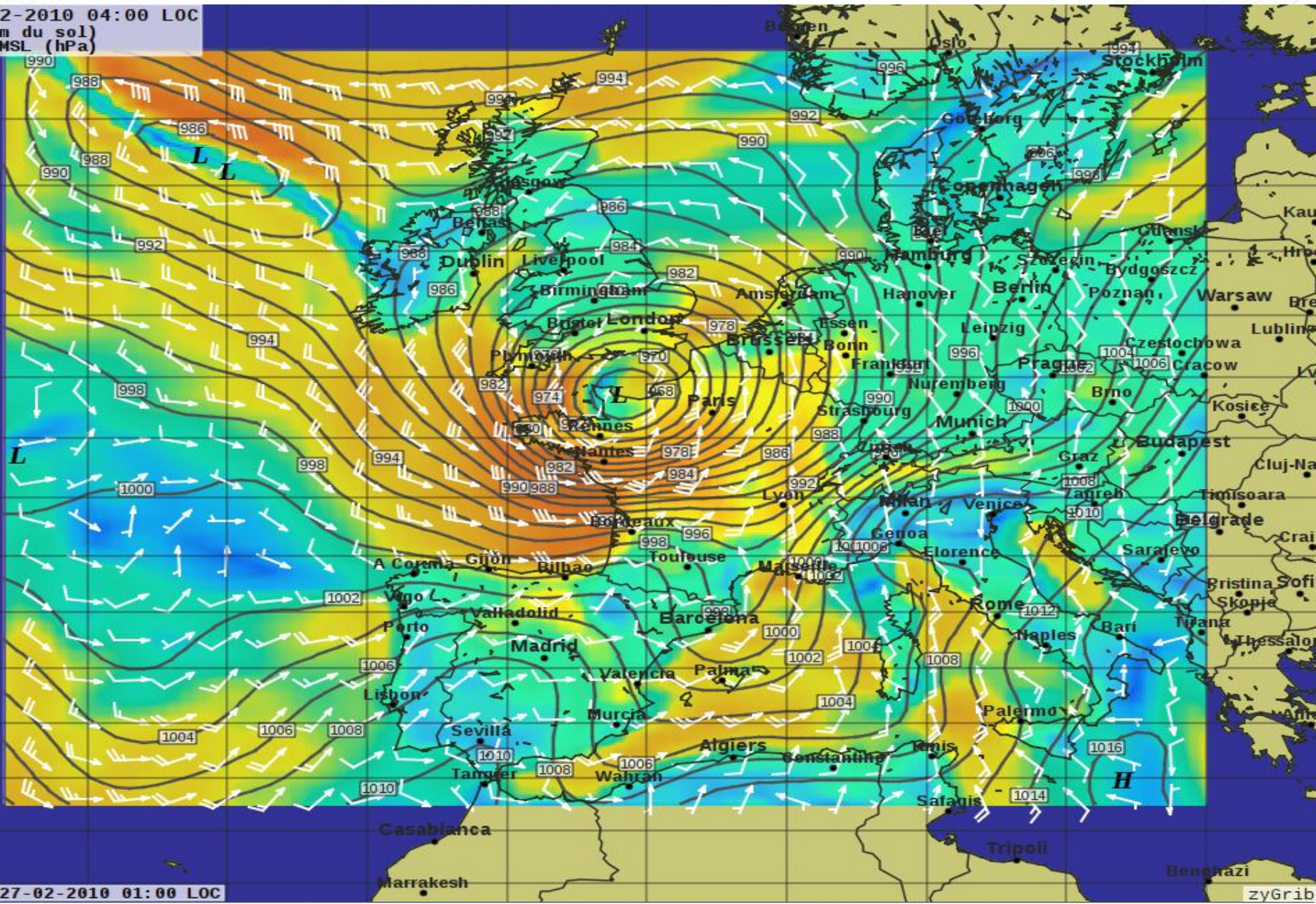




zygrib – Weather Forecasting



Dim 28-02-2010 04:00 LOC
Vent (10 m du sol)
Isobares MSL (hPa)



Ref: Sam 27-02-2010 01:00 LOC

zyGrib

Crisis Management

Sahana Agasti



Ushahidi



Crisis Management

<http://live.osgeo.org>



Sahana – Disaster Management



Sahana FOSS Disaster Management System - Firefox

File Edit View Go Bookmarks Tools Help dw-shortcuts dw-tools Gmail ApacheCon Reg. Ad...

around files in vim http://10.42.12.22/sa3-aug2212pm/www/index.php?mod=cr&act=gis_i Go

Sahana FOSS Disaster Manage... dev:ctags [My Wiki] Sahana FOSS Disaster Man... 10.42.12.22 / localhost / sahana...

Incident Pandemic

SAHANA

Disaster Management System

SHELTER REGISTRY

- Home
- Shelter Density
- Infection Spread
- Search
- Add Shelter
- Edit Shelter
- Reports

SAHANA MAIN

- Sahana Home
- Situation Map
- Catalogue System
- Disaster Victim Registry
- Organization Registry
- Inventory Management
- Reporting System
- Request/Aid Management
- Shelter Registry

Map of Shelters by Infected Population

Map Satellite Hybrid

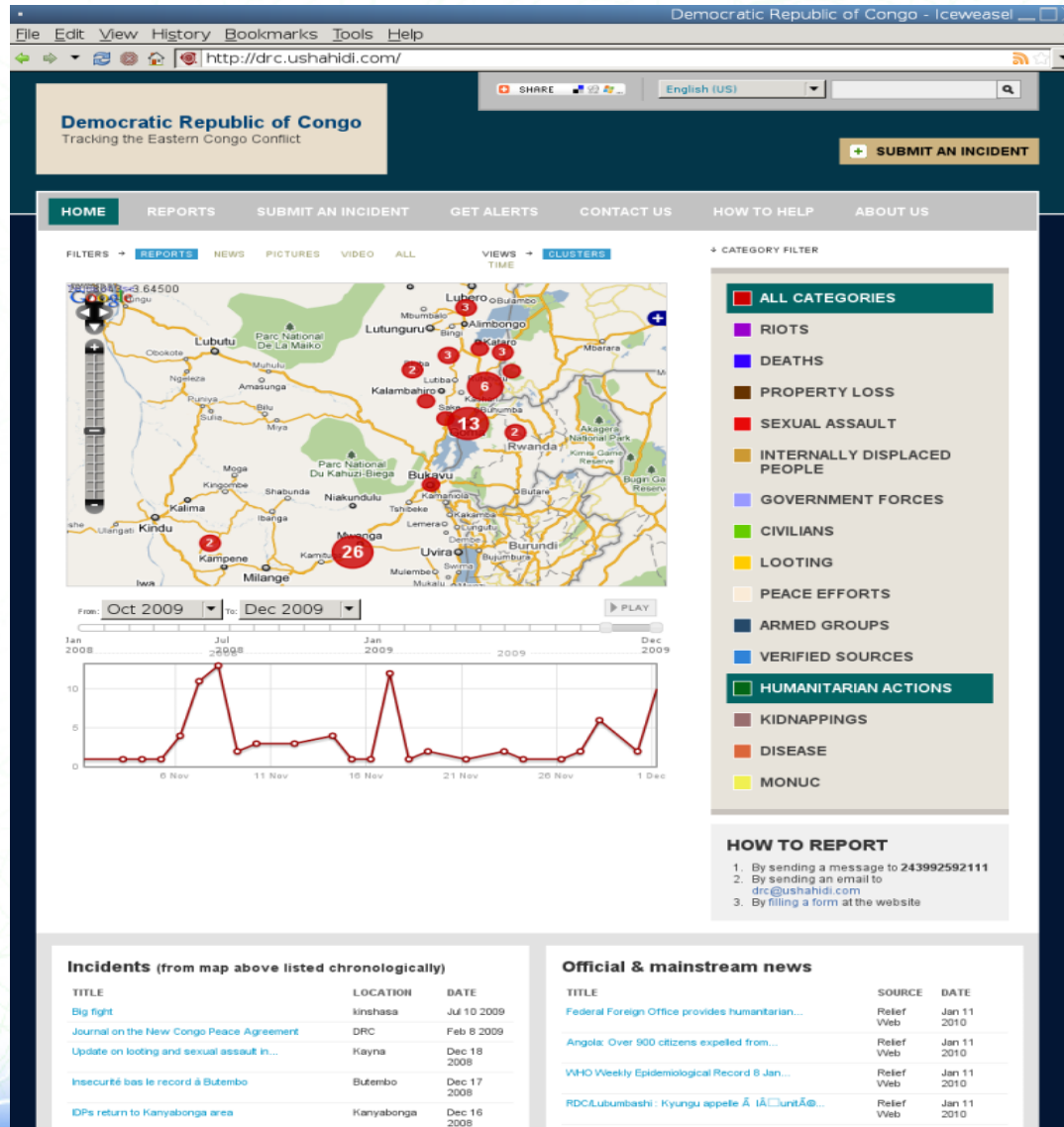
Old Town Community Center
75% Infected
View

Done

PageRank



Ushahidi – Event Timeline & Maps



<http://live.osgeo.org>

Map Data

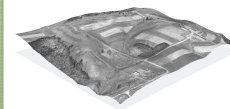
Natural Earth



Open Street Map



North Carolina



Map Data



Natural Earth – Map Data



Made with

Natural Earth

Free vector and raster map data @ naturalearthdata.com

Large scale data, 1:10m



Cultural Physical Raster

Medium scale data, 1:50m

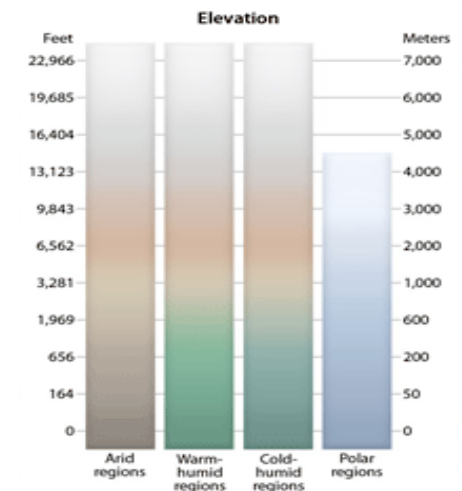


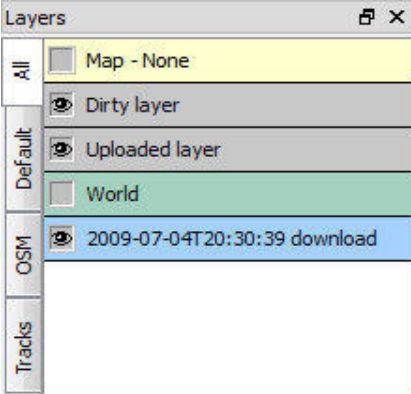
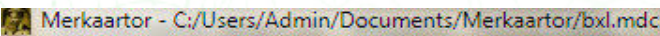
Cultural Physical Raster

Small scale data, 1:110m



Cultural Physical





Properties - Road

Id way_8511570

Generic Ways

Name s Éperonniers - Spoomakersstraat

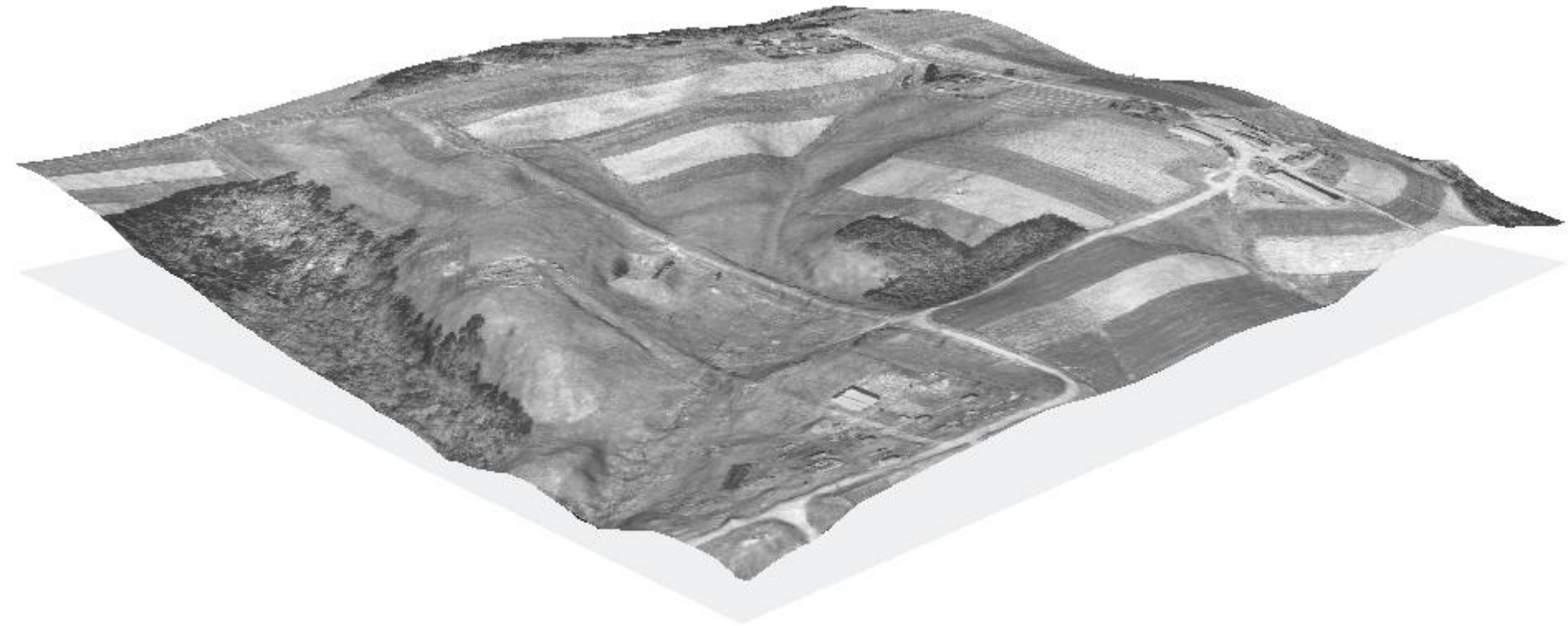
[Highway type](#) Residential road

[Oneway](#) ☒

Key	Value
created_by	JOSM
highway	residential
name	Rue des Épero...
name:fr	Rue des Épero...
name:nl	Spoormakerss...



North Carolina educational dataset



<http://live.osgeo.org>

Geospatial Libraries

GDAL/OGR



GeoTools



MetaCRS

libLAS



Geospatial Libraries

<http://live.osgeo.org>



GDAL/OGR – Data Translation



GDAL/OGR and PROJ.4

<http://www.gdal.org>

<http://proj.osgeo.org>

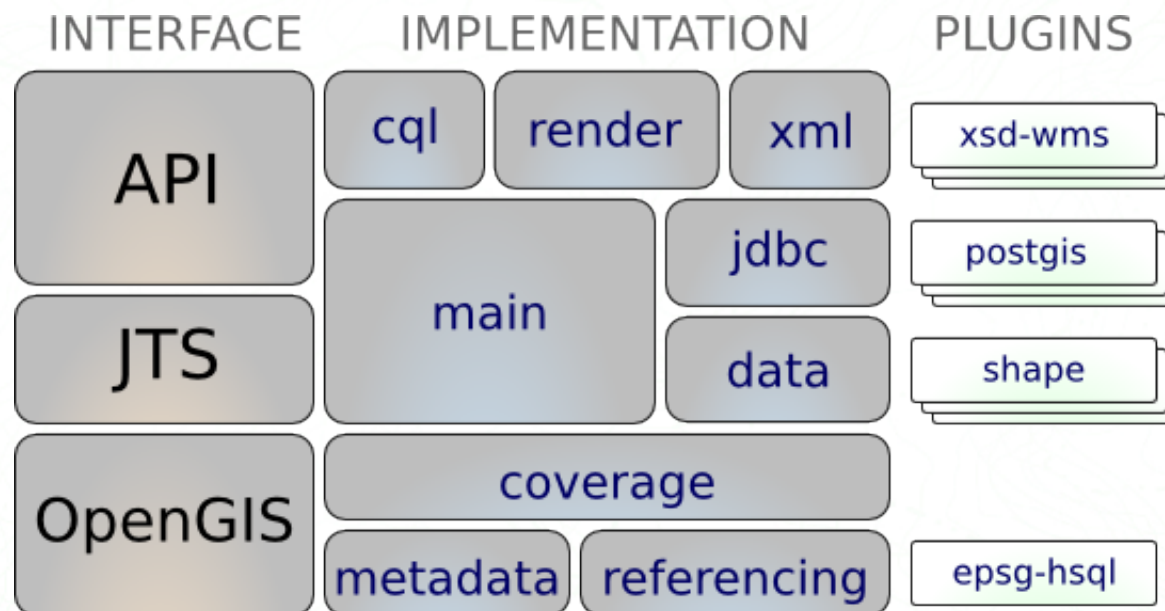


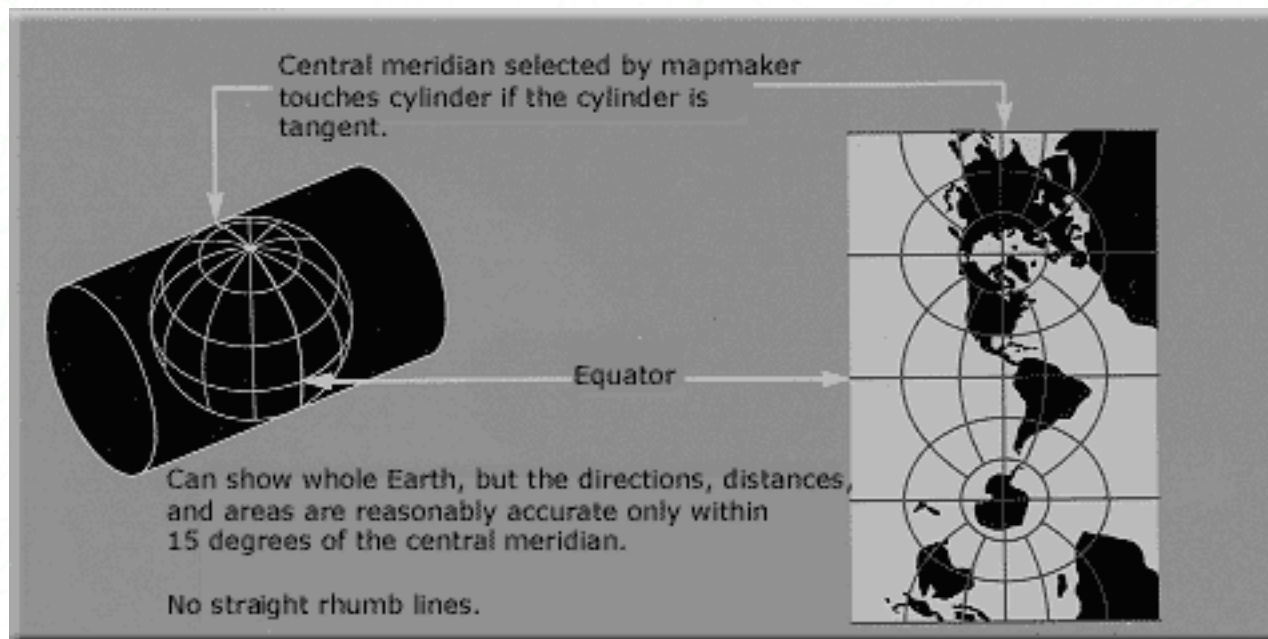
GDAL for Raster Data - The Geospatial Data Abstraction Library

Arc/Info ASCII Grid, **Arc/Info** Binary Grid (.adf), AIRSAR Polarimetric, Microsoft Windows Device Independent Bitmap (.bmp), BSB Nautical Chart Format (.kap), VTP Binary Terrain Format (.bt), CEOS (Spot for instance), First Generation USGS DOQ (.doq), DODS / OPeNDAP, New Labelled USGS DOQ (.doq), Military Elevation Data (.dt0, .dt1), **ERMapper** Compressed Wavelets (.ecw), **ESRI** .hdr Labelled, ENVI .hdr Labelled Raster, Envisat Image Product (.n1), EOSAT FAST Format, FITS (.fits), Graphics Interchange Format (.gif), GMT Compatible netCDF, **GRASS Rasters**, Golden Software ASCII Grid, Golden Software Binary Grid, Golden Software **Surfer** 7 Binary Grid, TIFF / **GeoTIFF** (.tif), GXF - Grid eXchange File, Hierarchical Data Format Release 4 (**HDF4**), Hierarchical Data Format Release 5 (HDF5), **Erdas Imagine** (.img), Vexcel MFF2, **Idrisi** Raster, Image Display and Analysis (WinDisp), ILWIS Raster Map (.mpr, .mpl), Japanese DEM (.mem), **JPEG JFIF** (.jpg), **JPEG2000** (JPEG2000, JP2KAK, JP2ECW, JP2MrSID), NOAA Polar Orbiter Level 1b Data Set (**AVHRR**), Erdas 7.x .LAN and .GIS, Daylon Leveller Heightfield, In Memory Raster, Vexcel MFF, Multi-resolution Seamless Image Database, Meteosat Second Generation, NDF, NITF, **NetCDF**, OGD I Bridge, PCI .aux Labelled, PCI Geomatics Database File, Portable Network Graphics (.png), PCRaster (.map), Netpbm (.ppm, .pgm), Swedish Grid RIK (.rik), RadarSat2 XML (product.xml), **ArcSDE** Raster, USGS SDTS DEM (*.CATD.DDF), Raster Matrix Format (*.rsw, .mtw), SAR CEOS, **SGI** Image Format, USGS ASCII DEM (.dem), OGC Web Coverage Server, X11 Pixmap (.xpm)

OGR for Vector Data - Simple Feature Library

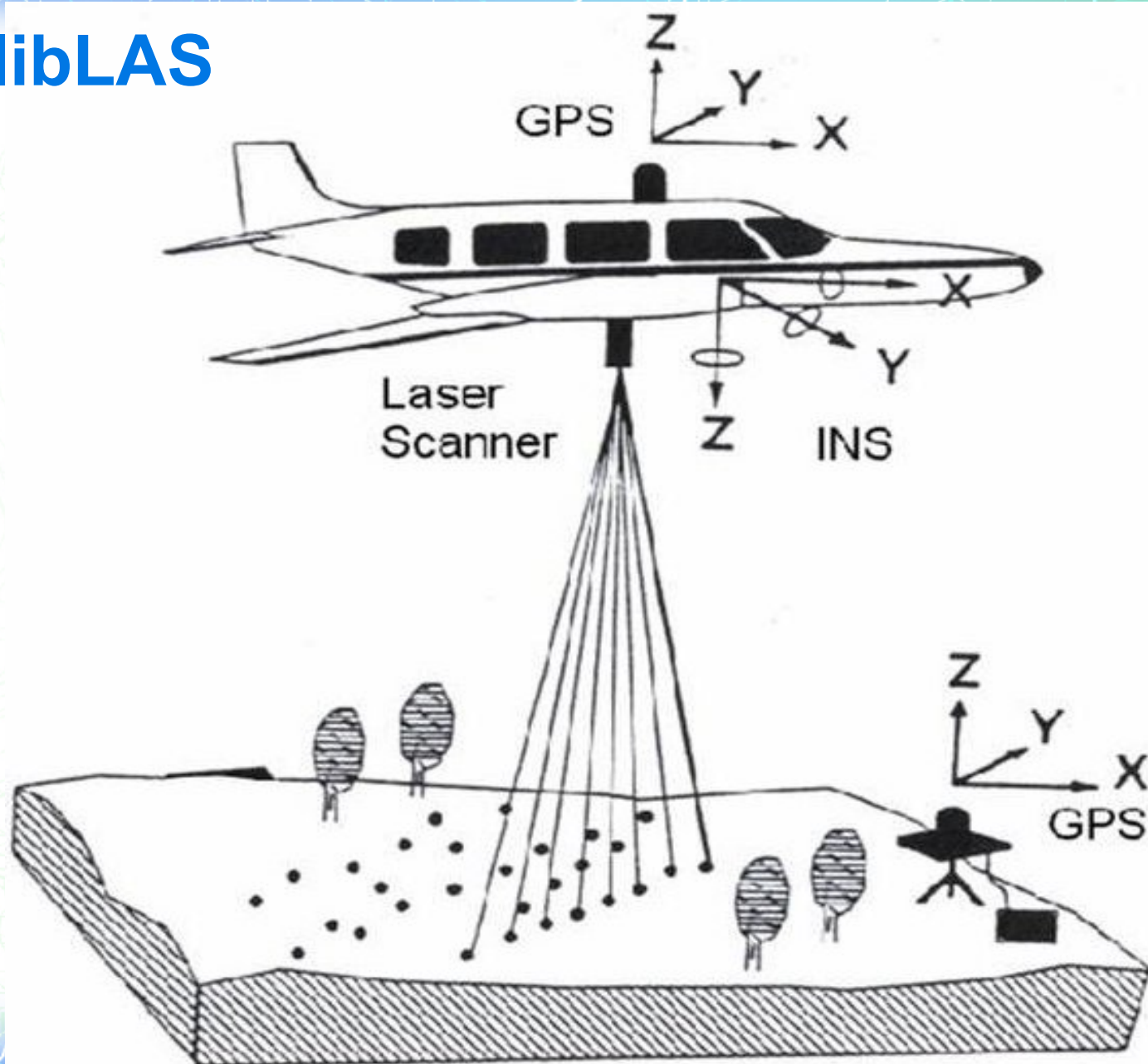
Arc/Info Binary Coverage, Comma Separated Value (.csv), DODS/OPeNDAP, DWG, **DXF**, ESRI Personal GeoDatabase, ESRI ArcSDE, **ESRI Shapefile**, FMEObjects Gateway, GML, **GMT Mapping**, **GRASS Vectors**, INTERLIS, **Google Earth KML**, Mapinfo File, Microstation DGN, Spatial **MySQL**, OGD I Vectors, ODBC generic database access layer, **Oracle** Spatial, PostgreSQL **PostGIS**, S-57 (ENC), SDTS, SQLite, UK .NTF, U.S. Census TIGER/Line, VRT - Virtual Datasource, Informix DataBlade







libLAS





Credits



Activity Workshop

Agustín Díez

Aikaterini Kapsampeli

Alan Boudreault

Alexandre Dube

Alex Mandel

Andrea Antonello

Andrea Yanza

Angelos Tzotsos

Anne Ghisla

Anton Patrushev

Argyros Argyridis

Astrid Emde

Brian Hamlin

Bruno Binet

Cameron Shorter

Christos Iossifidis

Dane Springmeyer

Daniel Kastl

David Terrativa

Diego González

Dominik Helle

Eike Hinderk Jürrens

Eric Lemoine

Etienne Dube

Fran Boon

François Prunayre

Frank Gasdorf

Gavin Treadgold

Gérald Fenoy

Hamish Bowman

Haruyuki Seki

Henry Addo

Hernan Olivera

Howard Butler

Ian Turton

Jackie Ng

Jan Drewnak

Javier Sanchez

Jesús Gómez

Jim Klassen

Jody Garnett

Johan Van de Wauw

Jorge Sanz

José Antonio Canalejo

Judit Mays

Klokan Petr Pridal

Kristof Lange

Lance McKee

Lars Lingner

Lucía Sanjaime

Mage Whopper

Manuel Grizonnet

Marco Puppini

Mark Leslie

Massimo Di Stefano

Mauricio Miranda

Mauricio Pazos

Michael Owonibi

Mike Adair

Milena Nowotarska

Nathaniel V. Kelso

Ned Horning

Nobusuke Iwasaki

Oliver Tonnhofer

Òscar Fonts

Otto Dassau

Pedro-Juan Ferrer

Pirmin Kalberer

Ricardo Pinho

Ruth Schoenbuchner

Samuel Mesa

Sergio Baños

Simon Cropper

Simon Pigot

Stefan A. Tzeggai

Stefan Hansen

Steve Lime

Thierry Badard

Thomas Baschetti

Trevor Wekel

Valenty Gonzalez

Yoichi Kayama



Information Center
for the
Environment,
University of
California,
Davis



Want to know more?



<http://live.osgeo.org>

OSGeo Foundation

<http://osgeo.org>

Conferences:

<http://foss4g.org>

Australia/New Zealand
support/training

<http://lisasoft.com>



FOSS4G 2010
Barcelona
Free and Open Source Software
for Geospatial CONFERENCE
SEP 6th–9th



<http://live.osgeo.org>