

Assignment: Georeferencing Practice

Author Attribution

Major contributors to this curriculum include (alphabetical):

Maria Fernandez
Michael Hamel
Quentin Lewis
Maili Page
James Peters
Charlie Schweik
Alexander Stepanov

Module Licensing Information

Version 1.0.  SOME RIGHTS RESERVED

This tutorial is licensed under a Creative Commons Attribution-No Derivative Works 3.0 License (<http://creativecommons.org/licenses/by-nd/3.0/>). This means that users are free to copy and share this material with others. Requests for creating new derivatives should be sent to the primary author.

Reviewed by

Michael Hamel

Problem formulation:

Let's suppose that you have a scanned map/plan for Hadley, MA. It can be a planner's drawing or a scanned version of paper map. You would like to incorporate the data layer with your existing spatial data. As you know, the process of adding spatial reference to a scanned map is called georeferencing. Your goal is to a) georeference the topo image and b) to create a map containing two layers: topo map and land use layer.

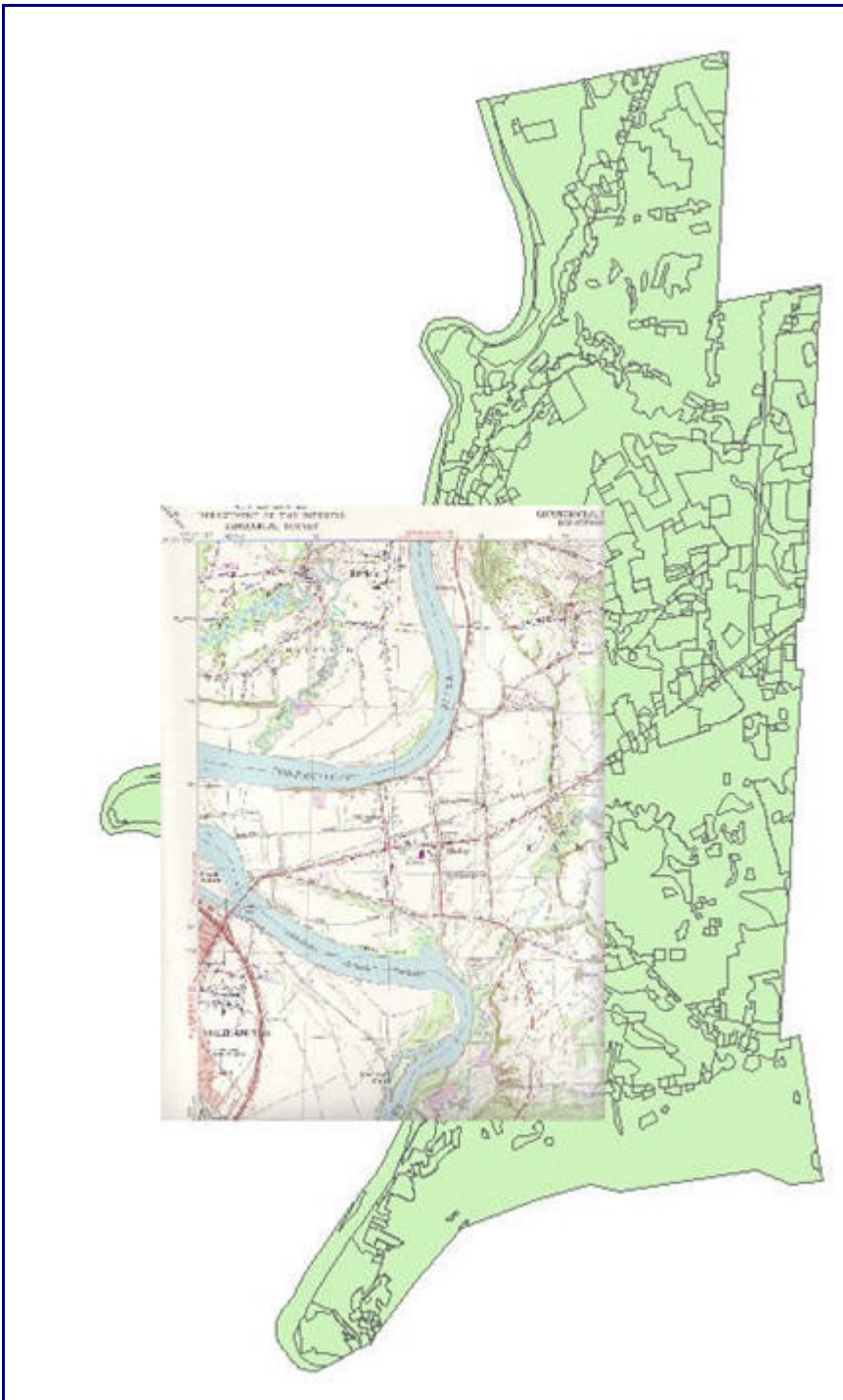


Figure 1: Example of snapshot of final product

Lab settings:

Please copy the data set for the lab to your working directory:
Download the data set from

1. http://linuxlab.sbs.umass.edu/beginning-fossgis-umass/datasets/lab_georef/GeorefLabHadley.zip [5Mb]
2. Extract the data archive to your working directory
3. You will have the following files

- a. ImgHadley.tif (a scanned topo map w/o spatial reference)
- b. Lus117_Project.* (files for a vector layer with land use data)

General guidelines:

1. Make sure that Georeferencing Plugin is available
2. Georeference the image imgHadley.tif
 - a. Define four control points and write down their

coordinates in the table below:

Point ID	X(East)	Y(North)
1		
2		
3		
4		

- b. Start the Georeferencing Plugin and register four control points
- c. Due to a bug in georeferencing plugin you need to correct X value in the world file:

the correct value for X is 695191

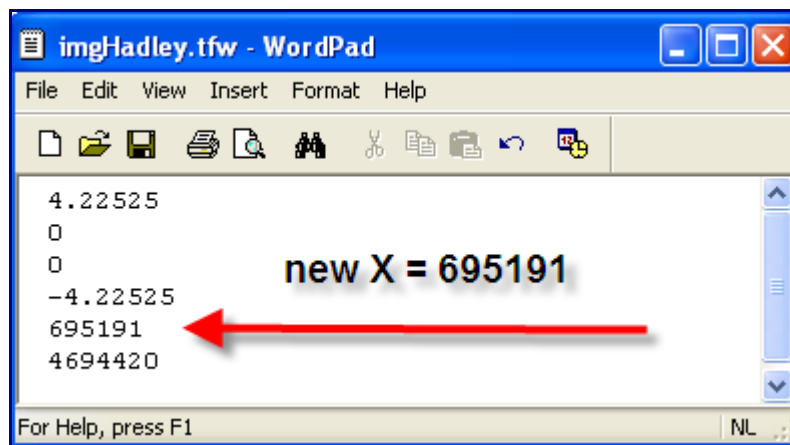


Figure 2: Correcting the georeferencing file

3. Add the georeferenced image/topo map to QGIS project
4. Add a vector land use layer (Lus117_Project.shp) from your home directory
5. Rename the layers in the TOC as “Topo Map” and “Land Use”.
6. Save the project
7. Export your results as a JPEG image (naming it yourname_georef.jpg)